



Republic of the Philippines
Department of Education
Region I
Schools Division of San Carlos City
San Carlos City, Pangasinan



Document Code: SDO-SCC-
QF-OSDS-BAC-011

Revision: 01

Effectivity date: 10-09-2020

Bidding Documents (Infrastructure)

Name of Office:
OSDS-BAC
OFFICE

PHILIPPINE BIDDING DOCUMENTS

Procurement of INFRASTRUCTURE PROJECTS

20241016-001

PROPOSED REPAIR AND REHABILITATION OF TEN (10) CLASSROOM SCHOOL BUILDING

ABC: PHP 6,200,000.00

Government of the Republic of the Philippines

Sixth Edition
July 2020

Preface

These Philippine Bidding Documents (PBDs) for the procurement of Infrastructure Projects (hereinafter referred to also as the “Works”) through Competitive Bidding have been prepared by the Government of the Philippines for use by all branches, agencies, departments, bureaus, offices, or instrumentalities of the government, including government-owned and/or -controlled corporations, government financial institutions, state universities and colleges, local government units, and autonomous regional government. The procedures and practices presented in this document have been developed through broad experience, and are for mandatory use in projects that are financed in whole or in part by the Government of the Philippines or any foreign government/foreign or international financing institution in accordance with the provisions of the 2016 revised Implementing Rules and Regulations (IRR) of Republic Act (RA) No. 9184.

The PBDs are intended as a model for admeasurements (unit prices or unit rates in a bill of quantities) types of contract, which are the most common in Works contracting.

The Bidding Documents shall clearly and adequately define, among others: (i) the objectives, scope, and expected outputs and/or results of the proposed contract; (ii) the eligibility requirements of Bidders; (iii) the expected contract duration; and (iv) the obligations, duties, and/or functions of the winning Bidder.

Care should be taken to check the relevance of the provisions of the PBDs against the requirements of the specific Works to be procured. If duplication of a subject is inevitable in other sections of the document prepared by the Procuring Entity, care must be exercised to avoid contradictions between clauses dealing with the same matter.

Moreover, each section is prepared with notes intended only as information for the Procuring Entity or the person drafting the Bidding Documents. They shall not be included in the final documents. The following general directions should be observed when using the documents:

- a. All the documents listed in the Table of Contents are normally required for the procurement of Infrastructure Projects. However, they should be adapted as necessary to the circumstances of the particular Project.
- b. Specific details, such as the “*name of the Procuring Entity*” and “*address for bid submission*,” should be furnished in the Instructions to Bidders, Bid Data Sheet, and Special Conditions of Contract. The final documents should contain neither blank spaces nor options.
- c. This Preface and the footnotes or notes in italics included in the Invitation to Bid, BDS, General Conditions of Contract, Special Conditions of Contract, Specifications, Drawings, and Bill of Quantities are not part of the text of the final document, although they contain instructions that the Procuring Entity should strictly follow.
- d. The cover should be modified as required to identify the Bidding Documents as to the names of the Project, Contract, and Procuring Entity, in addition to date of issue.

- e. Modifications for specific Procurement Project details should be provided in the Special Conditions of Contract as amendments to the Conditions of Contract. For easy completion, whenever reference has to be made to specific clauses in the Bid Data Sheet or Special Conditions of Contract, these terms shall be printed in bold typeface on Sections I (Instructions to Bidders) and III (General Conditions of Contract), respectively.
- f. For guidelines on the use of Bidding Forms and the procurement of Foreign-Assisted Projects, these will be covered by a separate issuance of the Government Procurement Policy Board.

TABLE OF CONTENTS

Glossary of Terms, Abbreviations, and Acronyms	5
Section I. Invitation to Bid.....	8
Section II. Instructions to Bidders	12
1. Scope of Bid.....	13
2. Funding Information	13
3. Bidding Requirements.....	13
4. Corrupt, Fraudulent, Collusive, Coercive, and Obstructive Practices	13
5. Eligible Bidders.....	14
6. Origin of Associated Goods	14
7. Subcontracts	14
8. Pre-Bid Conference.....	14
9. Clarification and Amendment of Bidding Documents	15
10. Documents Comprising the Bid: Eligibility and Technical Components	15
11. Documents Comprising the Bid: Financial Component	15
12. Alternative Bids	16
13. Bid Prices	16
14. Bid and Payment Currencies	16
15. Bid Security.....	16
16. Sealing and Marking of Bids.....	16
17. Deadline for Submission of Bids	17
18. Opening and Preliminary Examination of Bids	17
19. Detailed Evaluation and Comparison of Bids.....	17
20. Post Qualification.....	17
21. Signing of the Contract	18
Section III. Bid Data Sheet	19
Section IV. General Conditions of Contract.....	21
1. Scope of Contract.....	22
2. Sectional Completion of Works	22
3. Possession of Site.....	22
4. The Contractor’s Obligations.....	22
5. Performance Security	23
6. Site Investigation Reports	23

7.	Warranty.....	23
8.	Liability of the Contractor.....	23
9.	Termination for Other Causes.....	23
10.	Dayworks.....	24
11.	Program of Work.....	24
12.	Instructions, Inspections and Audits.....	24
13.	Advance Payment.....	24
14.	Progress Payments.....	24
15.	Operating and Maintenance Manuals.....	25
	Section V. Special Conditions of Contract.....	26
	Section VI. Specifications.....	28
	Section VII. Drawings.....	39
	Section VIII. Bill of Quantities.....	44
	Section IX. Checklist of Technical and Financial Documents.....	48

Glossary of Terms, Abbreviations, and Acronyms

ABC – Approved Budget for the Contract.

ARCC – Allowable Range of Contract Cost.

BAC – Bids and Awards Committee.

Bid – A signed offer or proposal to undertake a contract submitted by a bidder in response to and in consonance with the requirements of the bidding documents. Also referred to as *Proposal* and *Tender*. (2016 revised IRR, Section 5[c])

Bidder – Refers to a contractor, manufacturer, supplier, distributor and/or consultant who submits a bid in response to the requirements of the Bidding Documents. (2016 revised IRR, Section 5[d])

Bidding Documents – The documents issued by the Procuring Entity as the bases for bids, furnishing all information necessary for a prospective bidder to prepare a bid for the Goods, Infrastructure Projects, and/or Consulting Services required by the Procuring Entity. (2016 revised IRR, Section 5[e])

BIR – Bureau of Internal Revenue.

BSP – Bangko Sentral ng Pilipinas.

CDA – Cooperative Development Authority.

Consulting Services – Refer to services for Infrastructure Projects and other types of projects or activities of the GOP requiring adequate external technical and professional expertise that are beyond the capability and/or capacity of the GOP to undertake such as, but not limited to: (i) advisory and review services; (ii) pre-investment or feasibility studies; (iii) design; (iv) construction supervision; (v) management and related services; and (vi) other technical services or special studies. (2016 revised IRR, Section 5[i])

Contract – Refers to the agreement entered into between the Procuring Entity and the Supplier or Manufacturer or Distributor or Service Provider for procurement of Goods and Services; Contractor for Procurement of Infrastructure Projects; or Consultant or Consulting Firm for Procurement of Consulting Services; as the case may be, as recorded in the Contract Form signed by the parties, including all attachments and appendices thereto and all documents incorporated by reference therein.

Contractor – is a natural or juridical entity whose proposal was accepted by the Procuring Entity and to whom the Contract to execute the Work was awarded. Contractor as used in these Bidding Documents may likewise refer to a supplier, distributor, manufacturer, or consultant.

CPI – Consumer Price Index.

DOLE – Department of Labor and Employment.

DTI – Department of Trade and Industry.

Foreign-funded Procurement or Foreign-Assisted Project – Refers to procurement whose funding source is from a foreign government, foreign or international financing institution as specified in the Treaty or International or Executive Agreement. (2016 revised IRR, Section 5[b]).

GFI – Government Financial Institution.

GOCC – Government-owned and/or –controlled corporation.

Goods – Refer to all items, supplies, materials and general support services, except Consulting Services and Infrastructure Projects, which may be needed in the transaction of public businesses or in the pursuit of any government undertaking, project or activity, whether in the nature of equipment, furniture, stationery, materials for construction, or personal property of any kind, including non-personal or contractual services such as the repair and maintenance of equipment and furniture, as well as trucking, hauling, janitorial, security, and related or analogous services, as well as procurement of materials and supplies provided by the Procuring Entity for such services. The term “related” or “analogous services” shall include, but is not limited to, lease or purchase of office space, media advertisements, health maintenance services, and other services essential to the operation of the Procuring Entity. (2016 revised IRR, Section 5[r])

GOP – Government of the Philippines.

Infrastructure Projects – Include the construction, improvement, rehabilitation, demolition, repair, restoration or maintenance of roads and bridges, railways, airports, seaports, communication facilities, civil works components of information technology projects, irrigation, flood control and drainage, water supply, sanitation, sewerage and solid waste management systems, shore protection, energy/power and electrification facilities, national buildings, school buildings, hospital buildings, and other related construction projects of the government. Also referred to as *civil works or works*. (2016 revised IRR, Section 5[u])

LGUs – Local Government Units.

NFCC – Net Financial Contracting Capacity.

NGA – National Government Agency.

PCAB – Philippine Contractors Accreditation Board.

PhilGEPS - Philippine Government Electronic Procurement System.

Procurement Project – refers to a specific or identified procurement covering goods, infrastructure project or consulting services. A Procurement Project shall be described, detailed, and scheduled in the Project Procurement Management Plan prepared by the agency which shall be consolidated in the procuring entity's Annual Procurement Plan. (GPPB Circular No. 06-2019 dated 17 July 2019)

PSA – Philippine Statistics Authority.

SEC – Securities and Exchange Commission.

SLCC – Single Largest Completed Contract.

UN – United Nations.

Section I. Invitation to Bid

Notes on the Invitation to Bid

The Invitation to Bid (IB) provides information that enables potential Bidders to decide whether to participate in the procurement at hand. The IB shall be posted in accordance with Section 21.2 of the 2016 revised IRR of RA No. 9184.

Apart from the essential items listed in the Bidding Documents, the IB should also indicate the following:

- a. The date of availability of the Bidding Documents, which shall be from the time the IB is first advertised/posted until the deadline for the submission and receipt of bids;
- b. The place where the Bidding Documents may be acquired or the website where it may be downloaded;
- c. The deadline for the submission and receipt of bids; and
- d. Any important bid evaluation criteria.

The IB should be incorporated into the Bidding Documents. The information contained in the IB must conform to the Bidding Documents and in particular to the relevant information in the Bid Data Sheet.



Republic of the Philippines
Department of Education
Region I
Schools Division Office
San Carlos City, Pangasinan

INVITATION TO BID

PROPOSED REPAIR AND REHABILITATION OF TEN (10) CLASSROOM SCHOOL BUILDING

1. The **Department of Education (DepEd) Schools Division Office of San Carlos City (Pangasinan)**, through the **Bids and Awards Committee**, using the **FY 2024 GAA BMB-F-24-0006380 (SUB-ARO No. OSEC-1-24-5396)** intends to apply the sum **Six Million and Two Hundred Thousand Pesos (Php6,200,000.00)** with identification number: **20241016-001** being the ABC to payments under the contract for **“PROPOSED REPAIR AND REHABILITATION OF TEN (10) CLASSROOM SCHOOL BUILDING”**.

Bids received in excess of the ABC shall be automatically rejected at bid opening.

2. The **Schools Division Office of San Carlos City (Pangasinan)**, through its **Bids and Awards Committee (BAC)**, now invites bids for the above Procurement Project. Completion of the Works is required **120 calendar days** from receipt of the Notice to Proceed.

Bidders should have completed a contract similar to the Project. The description of an eligible bidder is contained in the Bidding Documents, particularly, in Section II (Instructions to Bidders).

3. Bidding will be conducted through open competitive bidding procedures using non-discretionary *“pass/fail”* criterion as specified in the 2016 revised Implementing Rules and Regulations (IRR) of Republic Act (RA) No. 9184.
4. Interested bidders may obtain further information from **DepEd Division of San Carlos City (Pangasinan)** and inspect the Bidding Documents at the address given below during working hours from **8:00 AM-5:00 PM on weekdays**.

5. A complete set of Bidding Documents may be acquired by interested bidders starting **October 17, 2024, until 10:00 AM of November 7, 2024**, from the given address and website(s) below **BAC Office, DepEd Division Office, San Carlos City, Pangasinan**, and upon payment of the applicable fee for the Bidding Documents, pursuant to the latest Guidelines issued by the GPPB, in the amount of **Ten Thousand Pesos (Php10,000.00)** to the **DepEd Division Cashier**.

The Procuring Entity shall allow the bidder to present its proof of payment for the fees on-site or through email at **bacsec.sccp@deped.gov.ph**

Payment may be made on-site or thru bank (**Deped SCC Trust Fund Account**), the account number will be given upon request of the bidder/s. Only bidder/s who purchased the Bidding Documents will be allowed to submit bids.

The Bidding documents may also be downloaded free of charge from the website of the Philippine Government Electronic Procurement System (PhilGEPS) and the website of the Procuring Entity, provided that Bidders shall pay the applicable fee for the Bidding Documents not later than the submission of their bids.

6. **DepEd Division of San Carlos City (Pangasinan)** will hold a Pre-Bid Conference¹ on **October 25, 2024, 10:00 AM** at the **2nd floor, Conference Hall, Schools Division Office of San Carlos City, Pangasinan** and/or through video conferencing <https://tinyurl.com/utzbw8e4> (MS Teams), which shall be open to prospective bidders.
7. Bids must be duly received by the **RECORDS OFFICE through manual submission at the Schools Division Office of San Carlos City, Pangasinan on or before 10:00 AM of November 7, 2024**, which shall then be submitted to the **BAC Secretariat, DepEd Division Office, San Carlos City, Pangasinan**.

Each Bidder shall submit one (1) copy original and two (2) hard copies of the first and second components of its bid. Soft Copy (Excel File) of the Financial Documents and Scanned Copy (PDF File Format) of Technical and Financial Documents, properly organized in a USB flash drive file shall also be submitted.

Bids submitted beyond the period of submission shall no longer be accepted.

8. All Bids must be accompanied by a bid security in any of the acceptable forms and in the amount stated in **ITB Clause 15.1**
9. Bid opening shall be on **November 7, 2024, 10:30 AM** at the **2nd floor, Conference Hall, Schools Division Office of San Carlos City, Pangasinan**.

¹ May be deleted in case the ABC is less than One Million Pesos (PhP1,000,000) where the Procuring Entity may not hold a Pre-Bid Conference.

Bids will be opened in the presence of the bidders and/or their authorized representatives.

Authorized representatives shall present a copy of Special Power of Attorney to the BAC secretariat upon registration.

10. The **DepEd Division of San Carlos City (Pangasinan)** reserves the right to reject any and all bids, declare a failure of bidding, or not award the contract at any time prior to contract award in accordance with **Sections 35.6 and 41** of the 2016 revised Implementing Rules and Regulations (IRR) of RA No. 9184, without thereby incurring any liability to the affected bidder or bidders.

In addition to the 2016 Revised IRR of RA 9184 and all other applicable laws, please be informed that **GPPB Circular 04-2020** also serves as a reference, especially on required forms and additional mandatory provisions for this project.

11. For further information, you may contact:

ATTY. LIAWA D. SIAPNO

Attorney III

Chairperson, BAC Secretariat

DepEd Division Office, San Carlos City (Pangasinan)

Roxas Boulevard, San Carlos City (Pangasinan)

(075) 632-3293/(075) 529-5628

bacsec.sccp@deped.gov.ph

12. You may visit the following websites:

For downloading of Bidding Documents:

<https://tinyurl.com/2p2suttu>

Issued on: October 16, 2024

DOMINGO L. LAUD, EdD, CESE
OIC, Assistant Schools Division Superintendent
Chairperson, Bids and Awards Committee

Section II. Instructions to Bidders

Notes on the Instructions to Bidders

This Section on the Instruction to Bidders (ITB) provides the information necessary for bidders to prepare responsive bids, in accordance with the requirements of the Procuring Entity. It also provides information on bid submission, eligibility check, opening and evaluation of bids, post-qualification, and on the award of contract.

1. **Scope of Bid**

The Procuring Entity, Department of Education (DepEd), Division of San Carlos City (Pangasinan), invites Bids for the **PROPOSED REPAIR AND REHABILITATION OF TEN (10) CLASSROOM SCHOOL BUILDING** with Project Identification Number **20241016-001**.

The Procurement Project (referred to herein as “Project”) is for the construction of Works, as described in Section VI (Specifications).

2. **Funding Information**

2.1. The GOP through the source of funding as indicated below for **FY 2024 GAA BMB-F-24-0006380 (SUB-ARO No. OSEC-1-24-5396)** in the amount of **Six Million and Two Hundred Thousand Pesos (Php6,200,000.00)**.

2.2. The source of funding is:

a. NGA, the General Appropriations Act or Special Appropriations.

3. **Bidding Requirements**

The Bidding for the Project shall be governed by all the provisions of RA No. 9184 and its 2016 revised IRR, including its Generic Procurement Manual and associated policies, rules and regulations as the primary source thereof, while the herein clauses shall serve as the secondary source thereof.

Any amendments made to the IRR and other GPPB issuances shall be applicable only to the ongoing posting, advertisement, or invitation to bid by the BAC through the issuance of a supplemental or bid bulletin.

The Bidder, by the act of submitting its Bid, shall be deemed to have inspected the site, determined the general characteristics of the contracted Works and the conditions for this Project, such as the location and the nature of the work; (b) climatic conditions; (c) transportation facilities; (c) nature and condition of the terrain, geological conditions at the site communication facilities, requirements, location and availability of construction aggregates and other materials, labor, water, electric power and access roads; and (d) other factors that may affect the cost, duration and execution or implementation of the contract, project, or work and examine all instructions, forms, terms, and project requirements in the Bidding Documents.

4. **Corrupt, Fraudulent, Collusive, Coercive, and Obstructive Practices**

The Procuring Entity, as well as the Bidders and Contractors, shall observe the highest standard of ethics during the procurement and execution of the contract. They or through an agent shall not engage in corrupt, fraudulent, collusive, coercive, and obstructive practices defined under Annex “I” of the 2016 revised IRR of RA No. 9184 or other integrity violations in competing for the Project.

5. Eligible Bidders

- 5.1. Only Bids of Bidders found to be legally, technically, and financially capable will be evaluated.
- 5.2. The Bidder must have an experience of having completed a Single Largest Completed Contract (SLCC) that is similar to this Project, equivalent to at least fifty percent (50%) of the ABC adjusted, if necessary, by the Bidder to current prices using the PSA's CPI, except under conditions provided for in Section 23.4.2.4 of the 2016 revised IRR of RA No. 9184.

A contract is considered to be "similar" to the contract to be bid if it has the major categories of work stated in the **BDS**.
- 5.3. For Foreign-funded Procurement, the Procuring Entity and the foreign government/foreign or international financing institution may agree on another track record requirement, as specified in the Bidding Document prepared for this purpose.
- 5.4. The Bidders shall comply with the eligibility criteria under Section 23.4.2 of the 2016 IRR of RA No. 9184.

6. Origin of Associated Goods

There is no restriction on the origin of Goods other than those prohibited by a decision of the UN Security Council taken under Chapter VII of the Charter of the UN.

7. Subcontracts

- 7.1. The Bidder may subcontract portions of the Project to the extent allowed by the Procuring Entity as stated herein, but in no case more than fifty percent (50%) of the Project.

The Procuring Entity has prescribed that:

- a. Subcontracting is not allowed.
- 7.1. Subcontracting of any portion of the Project does not relieve the Contractor of any liability or obligation under the Contract. The Supplier will be responsible for the acts, defaults, and negligence of any subcontractor, its agents, servants, or workmen as fully as if these were the Contractor's own acts, defaults, or negligence, or those of its agents, servants, or workmen.

8. Pre-Bid Conference

The Procuring Entity will hold a pre-bid conference for this Project on **October 25, 2024, 10:00 A.M.** at the **2nd Floor, Conference Hall, Schools Division Office of San Carlos City, Pangasinan.**

9. Clarification and Amendment of Bidding Documents

Prospective bidders may request for clarification on and/or interpretation of any part of the Bidding Documents. Such requests must be in writing and received by the Procuring Entity, either at its given address or through electronic mail indicated in the **IB**, at least ten (10) calendar days before the deadline set for the submission and receipt of Bids.

10. Documents Comprising the Bid: Eligibility and Technical Components

- 10.1. The first envelope shall contain the eligibility and technical documents of the Bid as specified in **Section IX. Checklist of Technical and Financial Documents**.
- 10.2. If the eligibility requirements or statements, the bids, and all other documents for submission to the BAC are in foreign language other than English, it must be accompanied by a translation in English, which shall be authenticated by the appropriate Philippine foreign service establishment, post, or the equivalent office having jurisdiction over the foreign bidder's affairs in the Philippines. For Contracting Parties to the Apostille Convention, only the translated documents shall be authenticated through an apostille pursuant to GPPB Resolution No. 13-2019 dated 23 May 2019. The English translation shall govern, for purposes of interpretation of the bid.
- 10.3. A valid special PCAB License in case of Joint Ventures, and registration for the type and cost of the contract for this Project. Any additional type of Contractor license or permit shall be indicated in the **BDS**.
- 10.4. A List of Contractor's key personnel (e.g., Project Manager, Project Engineers, Materials Engineers, and Foremen) assigned to the contract to be bid, with their complete qualification and experience data shall be provided. These key personnel must meet the required minimum years of experience set in the **BDS**.
- 10.5. A List of Contractor's major equipment units, which are owned, leased, and/or under purchase agreements, supported by proof of ownership, certification of availability of equipment from the equipment lessor/vendor for the duration of the project, as the case may be, must meet the minimum requirements for the contract set in the **BDS**.

11. Documents Comprising the Bid: Financial Component

- 11.1. The second bid envelope shall contain the financial documents for the Bid as specified in **Section IX. Checklist of Technical and Financial Documents**.
- 11.2. Any bid exceeding the ABC indicated in paragraph 1 of the **IB** shall not be accepted.

- 11.3. For Foreign-funded procurement, a ceiling may be applied to bid prices provided the conditions are met under Section 31.2 of the 2016 revised IRR of RA No. 9184.

12. Alternative Bids

Bidders shall submit offers that comply with the requirements of the Bidding Documents, including the basic technical design as indicated in the drawings and specifications. Unless there is a value engineering clause in the **BDS**, alternative Bids shall not be accepted.

13. Bid Prices

All bid prices for the given scope of work in the Project as awarded shall be considered as fixed prices, and therefore not subject to price escalation during contract implementation, except under extraordinary circumstances as determined by the NEDA and approved by the GPPB pursuant to the revised Guidelines for Contract Price Escalation guidelines.

14. Bid and Payment Currencies

14.1. Bid prices may be quoted in the local currency or tradeable currency accepted by the BSP at the discretion of the Bidder. However, for purposes of bid evaluation, Bids denominated in foreign currencies shall be converted to Philippine currency based on the exchange rate as published in the BSP reference rate bulletin on the day of the bid opening.

14.2. *Payment of the contract price shall be made in:*

a. Philippine Pesos.

15. Bid Security

15.1. The Bidder shall submit a Bid Securing Declaration or any form of Bid Security in the amount indicated in the **BDS**, which shall be not less than the percentage of the ABC in accordance with the schedule in the **BDS**.

15.2. The Bid and bid security shall be valid until *120 calendar days*. Any bid not accompanied by an acceptable bid security shall be rejected by the Procuring Entity as non-responsive.

16. Sealing and Marking of Bids

Each Bidder shall submit one copy of the first and second components of its Bid.

The Procuring Entity may request additional hard copies and/or electronic copies of the Bid. However, failure of the Bidders to comply with the said request shall not be a ground for disqualification.

If the Procuring Entity allows the submission of bids through online submission to the given website or any other electronic means, the Bidder shall submit an electronic copy of its Bid, which must be digitally signed. An electronic copy that cannot be opened or is corrupted shall be considered non-responsive and, thus, automatically disqualified.

17. Deadline for Submission of Bids

The Bidders shall submit on the specified date and time and either at its physical address or through online submission as indicated in paragraph 7 of the **IB**.

18. Opening and Preliminary Examination of Bids

18.1. The BAC shall open the Bids in public at the time, on the date, and at the place specified in paragraph 9 of the **IB**. The Bidders' representatives who are present shall sign a register evidencing their attendance. In case videoconferencing, webcasting or other similar technologies will be used, attendance of participants shall likewise be recorded by the BAC Secretariat.

In case the Bids cannot be opened as scheduled due to justifiable reasons, the rescheduling requirements under Section 29 of the 2016 revised IRR of RA No. 9184 shall prevail.

18.2. The preliminary examination of Bids shall be governed by Section 30 of the 2016 revised IRR of RA No. 9184.

19. Detailed Evaluation and Comparison of Bids

19.1. The Procuring Entity's BAC shall immediately conduct a detailed evaluation of all Bids rated "*passed*" using non-discretionary pass/fail criteria. The BAC shall consider the conditions in the evaluation of Bids under Section 32.2 of 2016 revised IRR of RA No. 9184.

19.2. If the Project allows partial bids, all Bids and combinations of Bids as indicated in the **BDS** shall be received by the same deadline and opened and evaluated simultaneously so as to determine the Bid or combination of Bids offering the lowest calculated cost to the Procuring Entity. Bid Security as required by **ITB** Clause 15 shall be submitted for each contract (lot) separately.

19.3. In all cases, the NFCC computation pursuant to Section 23.4.2.6 of the 2016 revised IRR of RA No. 9184 must be sufficient for the total of the ABCs for all the lots participated in by the prospective Bidder.

20. Post Qualification

Within a non-extendible period of five (5) calendar days from receipt by the Bidder of the notice from the BAC that it submitted the Lowest Calculated Bid, the Bidder shall submit its latest income and business tax returns filed and paid through the BIR Electronic Filing and Payment System (eFPS), and other appropriate licenses and permits required by law and stated in the **BDS**.

21. Signing of the Contract

The documents required in Section 37.2 of the 2016 revised IRR of RA No. 9184 shall form part of the Contract. Additional Contract documents are indicated in the **BDS**.

Section III. Bid Data Sheet

Notes on the Bid Data Sheet (BDS)

The Bid Data Sheet (BDS) consists of provisions that supplement, amend, or specify in detail, information, or requirements included in the ITB found in Section II, which are specific to each procurement.

This Section is intended to assist the Procuring Entity in providing the specific information in relation to corresponding clauses in the ITB and has to be prepared for each specific procurement.

The Procuring Entity should specify in the BDS information and requirements specific to the circumstances of the Procuring Entity, the processing of the procurement, and the bid evaluation criteria that will apply to the Bids. In preparing the BDS, the following aspects should be checked:

- a. Information that specifies and complements provisions of the ITB must be incorporated.
- b. Amendments and/or supplements, if any, to provisions of the ITB as necessitated by the circumstances of the specific procurement, must also be incorporated.

Bid Data Sheet

ITB Clause																						
5.2	For this purpose, contracts similar to the Project refer to contracts which have the same major categories of work, which shall be: REPAIRS AND REHABILITATION OF BUILDINGS.																					
7.1	<i>Sub-contracting is not allowed</i>																					
10.3	GENERAL ENGINEERING																					
10.4	The key personnel must meet the required minimum years of experience set below: <table border="1" style="width: 100%; border-collapse: collapse;"> <thead> <tr> <th style="text-align: left;"><u>Key Personnel</u></th> <th style="text-align: left;"><u>General Experience</u></th> <th style="text-align: left;"><u>Relevant Experience</u></th> </tr> </thead> <tbody> <tr> <td><i>General Foreman</i></td> <td><i>3 yrs.</i></td> <td><i>General Engineering Works</i></td> </tr> <tr> <td><i>Welder</i></td> <td><i>2 yrs.</i></td> <td><i>General Engineering Works</i></td> </tr> <tr> <td><i>Carpenter</i></td> <td><i>2 yrs.</i></td> <td><i>General Engineering Works</i></td> </tr> <tr> <td><i>Helper</i></td> <td><i>3 mos.</i></td> <td><i>General Engineering Works</i></td> </tr> <tr> <td><i>Mason</i></td> <td><i>2 yrs.</i></td> <td><i>General Engineering Works</i></td> </tr> <tr> <td><i>Painter</i></td> <td><i>2 yrs.</i></td> <td><i>General Engineering Works</i></td> </tr> </tbody> </table>	<u>Key Personnel</u>	<u>General Experience</u>	<u>Relevant Experience</u>	<i>General Foreman</i>	<i>3 yrs.</i>	<i>General Engineering Works</i>	<i>Welder</i>	<i>2 yrs.</i>	<i>General Engineering Works</i>	<i>Carpenter</i>	<i>2 yrs.</i>	<i>General Engineering Works</i>	<i>Helper</i>	<i>3 mos.</i>	<i>General Engineering Works</i>	<i>Mason</i>	<i>2 yrs.</i>	<i>General Engineering Works</i>	<i>Painter</i>	<i>2 yrs.</i>	<i>General Engineering Works</i>
<u>Key Personnel</u>	<u>General Experience</u>	<u>Relevant Experience</u>																				
<i>General Foreman</i>	<i>3 yrs.</i>	<i>General Engineering Works</i>																				
<i>Welder</i>	<i>2 yrs.</i>	<i>General Engineering Works</i>																				
<i>Carpenter</i>	<i>2 yrs.</i>	<i>General Engineering Works</i>																				
<i>Helper</i>	<i>3 mos.</i>	<i>General Engineering Works</i>																				
<i>Mason</i>	<i>2 yrs.</i>	<i>General Engineering Works</i>																				
<i>Painter</i>	<i>2 yrs.</i>	<i>General Engineering Works</i>																				
10.5	The minimum major equipment requirements are the following: <table border="1" style="width: 100%; border-collapse: collapse;"> <thead> <tr> <th style="text-align: left;"><u>Equipment</u></th> <th style="text-align: left;"><u>Capacity</u></th> <th style="text-align: left;"><u>Number of Units</u></th> </tr> </thead> <tbody> <tr> <td><i>Hand Tools</i></td> <td><i>N/A</i></td> <td></td> </tr> <tr> <td><i>Welding Machine</i></td> <td><i>N/A</i></td> <td></td> </tr> </tbody> </table>	<u>Equipment</u>	<u>Capacity</u>	<u>Number of Units</u>	<i>Hand Tools</i>	<i>N/A</i>		<i>Welding Machine</i>	<i>N/A</i>													
<u>Equipment</u>	<u>Capacity</u>	<u>Number of Units</u>																				
<i>Hand Tools</i>	<i>N/A</i>																					
<i>Welding Machine</i>	<i>N/A</i>																					
12	<i>[Insert Value Engineering clause if allowed.]</i>																					
15.1	The bid security shall be in the form of a Bid Securing Declaration or any of the following forms and amounts: <ul style="list-style-type: none"> a. The amount of not less than Php124,000.00 <i>[two percent (2%) of ABC]</i>, if bid security is in cash, cashier's/manager's check, bank draft/guarantee or irrevocable letter of credit; b. The amount of not less than Php310,000.00 <i>[five percent (5%) of ABC]</i> if bid security is in Surety Bond. 																					
19.2	-																					
20	<i>Licenses and permits relevant to the Project and the corresponding law requiring it, e.g. Environmental Compliance Certificate, Certification that the project site is not within a geohazard zone, etc., must be present, if applicable</i>																					
21	Additional contract documents relevant to the Project that may be required by existing laws and/or the Procuring Entity, such as construction schedule and S-curve, manpower schedule, construction methods, equipment utilization schedule, construction safety and health program approved by the DOLE, and other acceptable tools of project scheduling.																					

Section IV. General Conditions of Contract

Notes on the General Conditions of Contract

The General Conditions of Contract (GCC) in this Section, read in conjunction with the Special Conditions of Contract in Section V and other documents listed therein, should be a complete document expressing all the rights and obligations of the parties.

Matters governing performance of the Contractor, payments under the contract, or matters affecting the risks, rights, and obligations of the parties under the contract are included in the GCC and Special Conditions of Contract.

Any complementary information, which may be needed, shall be introduced only through the Special Conditions of Contract.

1. Scope of Contract

This Contract shall include all such items, although not specifically mentioned, that can be reasonably inferred as being required for its completion as if such items were expressly mentioned herein. All the provisions of RA No. 9184 and its 2016 revised IRR, including the Generic Procurement Manual, and associated issuances, constitute the primary source for the terms and conditions of the Contract, and thus, applicable in contract implementation. Herein clauses shall serve as the secondary source for the terms and conditions of the Contract.

This is without prejudice to Sections 74.1 and 74.2 of the 2016 revised IRR of RA No. 9184 allowing the GPPB to amend the IRR, which shall be applied to all procurement activities, the advertisement, posting, or invitation of which were issued after the effectivity of the said amendment.

2. Sectional Completion of Works

If sectional completion is specified in the **Special Conditions of Contract (SCC)**, references in the Conditions of Contract to the Works, the Completion Date, and the Intended Completion Date shall apply to any Section of the Works (other than references to the Completion Date and Intended Completion Date for the whole of the Works).

3. Possession of Site

3.1 The Procuring Entity shall give possession of all or parts of the Site to the Contractor based on the schedule of delivery indicated in the **SCC**, which corresponds to the execution of the Works. If the Contractor suffers delay or incurs cost from failure on the part of the Procuring Entity to give possession in accordance with the terms of this clause, the Procuring Entity's Representative shall give the Contractor a Contract Time Extension and certify such sum as fair to cover the cost incurred, which sum shall be paid by Procuring Entity.

3.2 If possession of a portion is not given by the above date, the Procuring Entity will be deemed to have delayed the start of the relevant activities. The resulting adjustments in contract time to address such delay may be addressed through contract extension provided under Annex "E" of the 2016 revised IRR of RA No. 9184.

4. The Contractor's Obligations

The Contractor shall employ the key personnel named in the Schedule of Key Personnel indicating their designation, in accordance with **ITB** Clause 10.3 and specified in the **BDS**, to carry out the supervision of the Works.

The Procuring Entity will approve any proposed replacement of key personnel only if their relevant qualifications and abilities are equal to or better than those of the personnel listed in the Schedule.

5. Performance Security

- 5.1. Within ten (10) calendar days from receipt of the Notice of Award from the Procuring Entity but in no case later than the signing of the contract by both parties, the successful Bidder shall furnish the performance security in any of the forms prescribed in Section 39 of the 2016 revised IRR.
- 5.2. The Contractor, by entering into the Contract with the Procuring Entity, acknowledges the right of the Procuring Entity to institute action pursuant to R.A. No. 3688 against any subcontractor be they an individual, firm, partnership, corporation, or association supplying the Contractor with labor, materials and/or equipment for the performance of this Contract.

6. Site Investigation Reports

The Contractor, in preparing the Bid, shall rely on any Site Investigation Reports referred to in the SCC supplemented by any information obtained by the Contractor.

7. Warranty

- 7.1. In case the Contractor fails to undertake the repair works under Section 62.2.2 of the 2016 revised IRR, the Procuring Entity shall forfeit its performance security, subject its property(ies) to attachment or garnishment proceedings, and perpetually disqualify it from participating in any public bidding. All payables of the GOP in his favor shall be offset to recover the costs.
- 7.2. The warranty against Structural Defects/Failures, except that occasioned-on force majeure, shall cover the period from the date of issuance of the Certificate of Final Acceptance by the Procuring Entity. Specific duration of the warranty is found in the SCC.

8. Liability of the Contractor

Subject to additional provisions, if any, set forth in the SCC, the Contractor's liability under this Contract shall be as provided by the laws of the Republic of the Philippines.

If the Contractor is a joint venture, all partners to the joint venture shall be jointly and severally liable to the Procuring Entity.

9. Termination for Other Causes

Contract termination shall be initiated in case it is determined *prima facie* by the Procuring Entity that the Contractor has engaged, before, or during the implementation of the contract, in unlawful deeds and behaviors relative to contract acquisition and implementation, such as, but not limited to corrupt, fraudulent, collusive, coercive, and obstructive practices as stated in **ITB** Clause 4.

10. Dayworks

Subject to the guidelines on Variation Order in Annex “E” of the 2016 revised IRR of RA No. 9184, and if applicable as indicated in the **SCC**, the Dayworks rates in the Contractor’s Bid shall be used for small additional amounts of work only when the Procuring Entity’s Representative has given written instructions in advance for additional work to be paid for in that way.

11. Program of Work

11.1. The Contractor shall submit to the Procuring Entity’s Representative for approval the said Program of Work showing the general methods, arrangements, order, and timing for all the activities in the Works. The submissions of the Program of Work are indicated in the **SCC**.

11.2. The Contractor shall submit to the Procuring Entity’s Representative for approval an updated Program of Work at intervals no longer than the period stated in the **SCC**. If the Contractor does not submit an updated Program of Work within this period, the Procuring Entity’s Representative may withhold the amount stated in the **SCC** from the next payment certificate and continue to withhold this amount until the next payment after the date on which the overdue Program of Work has been submitted.

12. Instructions, Inspections and Audits

The Contractor shall permit the GOP or the Procuring Entity to inspect the Contractor’s accounts and records relating to the performance of the Contractor and to have them audited by auditors of the GOP or the Procuring Entity, as may be required.

13. Advance Payment

The Procuring Entity shall, upon a written request of the Contractor which shall be submitted as a Contract document, make an advance payment to the Contractor in an amount not exceeding fifteen percent (15%) of the total contract price, to be made in lump sum, or at the most two installments according to a schedule specified in the **SCC**, subject to the requirements in Annex “E” of the 2016 revised IRR of RA No. 9184.

14. Progress Payments

The Contractor may submit a request for payment for Work accomplished. Such requests for payment shall be verified and certified by the Procuring Entity’s Representative/Project Engineer. Except as otherwise stipulated in the **SCC**, materials and equipment delivered on the site but not completely put in place shall not be included for payment.

15. Operating and Maintenance Manuals

- 15.1. If required, the Contractor will provide “as built” Drawings and/or operating and maintenance manuals as specified in the **SCC**.
- 15.2. If the Contractor does not provide the Drawings and/or manuals by the dates stated above, or they do not receive the Procuring Entity’s Representative’s approval, the Procuring Entity’s Representative may withhold the amount stated in the **SCC** from payments due to the Contractor.

Section V. Special Conditions of Contract

Notes on the Special Conditions of Contract

Similar to the BDS, the clauses in this Section are intended to assist the Procuring Entity in providing contract-specific information in relation to corresponding clauses in the GCC found in Section IV.

The Special Conditions of Contract (SCC) complement the GCC, specifying contractual requirements linked to the special circumstances of the Procuring Entity, the Procuring Entity's country, the sector, and the Works procured. In preparing this Section, the following aspects should be checked:

- a. Information that complements provisions of the GCC must be incorporated.
- b. Amendments and/or supplements to provisions of the GCC as necessitated by the circumstances of the specific purchase, must also be incorporated.

However, no special condition which defeats or negates the general intent and purpose of the provisions of the GCC should be incorporated herein.

Special Conditions of Contract

GCC Clause	
2	<i>The Procuring Entity did not specify for completion of the Works by section, i.e. “sectional completion,”; the completion of Works shall be done fully within the required completion period.</i>
4.1	<i>Schedule of delivery of the possession of the site to the Contractor, whether full or in part, shall be delivered within the required completion period</i>
6	The site investigation reports shall be coordinated to the Division Engineer
7.2	<p><i>[In case of permanent structures, such as buildings of types 4 and 5 as classified under the National Building Code of the Philippines and other structures made of steel, iron, or concrete which comply with relevant structural codes (e.g., DPWH Standard Specifications), such as, but not limited to, steel/concrete bridges, flyovers, aircraft movement areas, ports, dams, tunnels, filtration and treatment plants, sewerage systems, power plants, transmission and communication towers, railway system, and other similar permanent structures:] Fifteen (15) years.</i></p> <p><i>[In case of semi-permanent structures, such as buildings of types 1, 2, and 3 as classified under the National Building Code of the Philippines, concrete/asphalt roads, concrete river control, drainage, irrigation lined canals, river landing, deep wells, rock causeway, pedestrian overpass, and other similar semi-permanent structures:] Five (5) years.</i></p> <p><i>[In case of other structures, such as bailey and wooden bridges, shallow wells, spring developments, and other similar structures:] Two (2) years.</i></p>
10	a. Dayworks are applicable at the rate shown in the Contractor’s original Bid.
11.1	The Contractor shall submit the Program of Work to the Procuring Entity’s Representative during opening of bids (included in the submitted bid)
11.2	The amount to be withheld for late submission of an updated Program of Work shall be coordinated to the Division Engineer.
13	The amount of the advance payment is <i>15% of the total contract price and schedule of payment, if deemed applicable.</i>
14	Materials and equipment delivered on the site but not completely put in place shall be included for payment is Not Allowed.
15.1	<p>The date by which operating, and maintenance manuals are required <i>shall be coordinated to the Division Engineer.</i></p> <p>The date by which “as built” drawings are required <i>shall be coordinated to the Division Engineer.</i></p>
15.2	The amount to be withheld for failing to produce “as built” drawings and/or operating and maintenance manuals by the date required <i>shall be coordinated to the Division Engineer.</i>

Section VI. Specifications

Notes on Specifications

A set of precise and clear specifications is a prerequisite for Bidders to respond realistically and competitively to the requirements of the Procuring Entity without qualifying or conditioning their Bids. In the context of international competitive bidding, the specifications must be drafted to permit the widest possible competition and, at the same time, present a clear statement of the required standards of workmanship, materials, and performance of the goods and services to be procured. Only if this is done will the objectives of economy, efficiency, and fairness in procurement be realized, responsiveness of Bids be ensured, and the subsequent task of bid evaluation facilitated. The specifications should require that all goods and materials to be incorporated in the Works be new, unused, of the most recent or current models, and incorporate all recent improvements in design and materials unless provided otherwise in the Contract.

Samples of specifications from previous similar projects are useful in this respect. The use of metric units is mandatory. Most specifications are normally written specially by the Procuring Entity or its representative to suit the Works at hand. There is no standard set of Specifications for universal application in all sectors in all regions, but there are established principles and practices, which are reflected in these PBDs.

There are considerable advantages in standardizing General Specifications for repetitive Works in recognized public sectors, such as highways, ports, railways, urban housing, irrigation, and water supply, in the same country or region where similar conditions prevail. The General Specifications should cover all classes of workmanship, materials, and equipment commonly involved in construction, although not necessarily to be used in a particular Works Contract. Deletions or addenda should then adapt the General Specifications to the particular Works.

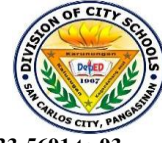
Care must be taken in drafting specifications to ensure that they are not restrictive. In the specification of standards for goods, materials, and workmanship, recognized international standards should be used as much as possible. Where other particular standards are used, whether national standards or other standards, the specifications should state that goods, materials, and workmanship that meet other authoritative standards, and which ensure substantially equal or higher quality than the standards mentioned, will also be acceptable. The following clause may be inserted in the SCC.

Sample Clause: Equivalency of Standards and Codes

Wherever reference is made in the Contract to specific standards and codes to be met by the goods and materials to be furnished, and work performed or tested, the provisions of the latest current edition or revision of the relevant standards and codes in effect shall apply, unless otherwise expressly stated in the Contract. Where such standards and codes are national, or relate to a particular country or region, other authoritative standards that ensure a substantially equal or higher quality than the standards and codes specified will be accepted

subject to the Procuring Entity's Representative's prior review and written consent. Differences between the standards specified and the proposed alternative standards shall be fully described in writing by the Contractor and submitted to the Procuring Entity's Representative at least twenty-eight (28) days prior to the date when the Contractor desires the Procuring Entity's Representative's consent. In the event the Procuring Entity's Representative determines that such proposed deviations do not ensure substantially equal or higher quality, the Contractor shall comply with the standards specified in the documents.

These notes are intended only as information for the Procuring Entity or the person drafting the Bidding Documents. They should not be included in the final Bidding Documents.



PROGRAM OF WORKS

DETAILED COST ESTIMATE

PROJECT : **PROPOSED REPAIR AND REHABILITATION OF TEN (10) - CLASSROOM SCHOOL BUILDING**
 SCHOOL : MABALBALINO ELEMENTARY SCHOOL
 LOCATION : SAN CARLOS CITY
 OWNER : DEPARTMENT OF EDUCATION

ITEM NO.	DESCRIPTION	UNIT	QTY	UNIT COST		TOTAL COST		GRAND TOTAL
				MATERIAL	LABOR	MATERIAL	LABOR	
GENERAL REQUIREMENTS								
	Mobilization/Temporary Structures, Utilities and Services/Demobilization, As-Built Plan	lot	1.00					
	Safety and Health	lot	1.00					
	Project Billboard	lot	1.00					
	Sub-total							
BUILDING NO.1: SCHOOL BUILDING 1- 7 X 18 3CL								
5.00: Masonry Works								
	Masonry	lot	1.00					
2.02	Portland Cement	bag	5.00					
2.05	Washed Sand	cu.m	1.00					
5.03	CHB 4" thk	pc	54.00					
	Sub-total							
6.00 Doors and Windows								
6.01	Removal of Door with Jamb	set	3.00					
6.02	Removal of Window with Jamb	sq.m	28.80					
6.03	D-1, Steel door 0.90m x 2.10m On 50mm x 100mm Steel Jamb with Padlock	set	6.00					
6.07	W - 1, (2.6 x 1.6 m) Jalousie Window with Clear Glass Blades on JalouPlus Type Silver Colored Frame and Fixed Clear Glass Transom on 50 x 100 mm Steel Jamb complete with Accessories	set	3.00					
6.45	W - 2, (1.3 x 1.6 m) Jalousie Window with Clear Glass Blades on JalouPlus Type Silver Colored Frame and Fixed Clear Glass Transom on 50 x 100 mm Steel Jamb complete with Accessories	set	9.00					
6.15	Security Grilles	sq.ft	335.71					
	Sub-total							
7.00 Steel Works								
7.08	Trusses and Members							
9.01	Removal of Steel Truss	lot	1.00					
9.01	Removal of Purlins	lot	1.00					
7.01	L 50 X 50 X 6mm	kg	1,814.40					
7.09	2" x 4" 1.5mm C-purlins	kg	1,480.32					
7.10	L 50 x 50 x 2mm	kg	33.00					
7.22	12mmØ Sag Rods with Standard Nuts and Washers	pc	192.00					
7.19	Plain Round Bar 16mmØ x 6m	pc	24.00					
7.20	Turn Buckle 16 mmØ	pc	24.00					
7.15	Anchor Bolt with Nuts and Washer, 16mmØ x 50mm x 300mm	pc	56.00					
7.12	Steel Plate 1.20m x 2.40m x 10mm thk	pc	2.00					
7.13	Steel Plate 1.20m x 2.40m x 12mm thk	pc	0.50					
7.36	Welding Rod	kg	55.00					
13.11	Primer, Zinc Chromate	gal	3.00					
	Sub-total							

8.00	Roofing Works						
8.01	Removal of Roofing Sheets	sq m	222.00				
8.02	Removal of Ridge Roll	pc	9.00				
8.03	Removal of Flashing	pc	11.00				
8.05	Removal of Fascia Board	pc	12.00				
8.06	G.I. Long-Span Roofing, Corrugated, Pre-Painted, 1220mm x 0.5mm BMT	lm	222.00				
8.07	G.I. Ridge Roll, Prefomed, Pre-Painted, 0.610m x 2.440m x 0.5mm BMT	pc	9.00				
8.08	G.I. Flashing, Prefomed, Pre-Painted, 0.610m x 2.440m x 0.5mm BMT	pc	11.00				
	2" x 10" x 1.0mm C - purlins	kg	216.48				
	L 38 x 38 x 4.5 mm	kg	97.20				
	J- Bolt (6mm dia.)	pc	2,220.00				
8.10	Teckscrew 2-1/2"	pc	108.00				
8.13	Roof Sealant	L	1.00				
	Blind Rivets	pc	100.00				
	Sub-total						
9.00	Carpentry Works						
	Interior Ceiling						
9.01	Removal of Ceiling	sq.m	147.20				
9.05	Plywood, Marine 1/4" x 4' x 8'	pc	52.00				
9.10	50mm x 50mm ceiling joist	bdf	362.88				
9.08	50mm x 75mm ceiling Joist	bdf	641.52				
9.11	Rough Lumber, Sun Dried, tanguile	bdf	1,004.40				
8.11	Finishing Nails	kg	3.00				
9.22	Concrete Nails	kg	2.00				
9.12	CWN, Assorted	kg	3.00				
9.14	Wood preservatives, Brown	l	1.00				
	Exterior Ceiling	sq.m	57.80				
9.05	Plywood, Marine 1/4" x 4' x 8'	pc	21.00				
9.10	50mm x 50mm ceiling joist	bdf	96.00				
9.08	50mm x 75mm ceiling Joist	bdf	158.40				
9.11	Rough Lumber, Sun Dried, tanguile	bdf	254.40				
8.11	Finishing Nails	kg	1.00				
9.22	Concrete Nails	kg	1.00				
9.12	CWN, Assorted	kg	1.00				
9.14	Wood preservatives, Brown	L	1.00				
9.13	25mm x 25mm x 300mm Wood slats @25mm clear spacing ceiling ventilation (provide stainless steel wire mesh inside)	pc	4.00				
	Blackboards	sq.m	17.28				
9.18	S4S Lumber, Kiln Dried, Tanguile	bd.ft	222.00				
9.20	Lawanit, 1/4" thk	pc	6.00				
9.21	Finishing Nails	kg	1.00				
4.04	CWN, Assorted	kg	4.00				
9.22	Concrete Nails	kg	1.00				
	Sub-total						
10.00	Electrical Works						
	Roughing-ins						
10.01	Electrical Conduit uPVC, 15mmØ	pc	45.00				
10.08	Entrance Cap 20mm dia.	pc	1.00				
10.12	Junction Box, 4" x 4" G.I.	pc	15.00				
10.13	Utility Box, 2' x 4" G.I.	pc	10.00				
10.14	Grounding Rod, 2.4m x 16mm dia.	pc	1.00				
	Wires & Fixtures		-				
10.16	3.5 mm² THHN Wire, Stranded	m	360.00				
	8.0 mm² THHN Wire, Stranded	m	10.00				
10.27	Duplex Convenience Outlet, Grounding Type, 20A, 250V	set	12.00				
10.32	3 Single Pole Wall Switches in One Switch Plate (10 AMP, 230V)	set	3.00				
	Single tube w/ cover + T8 LED tube, 20w, 120cm length	set	3.00				
	Double tube w/ cover + T8 LED tube, 20w x 2 , 120cm length	set	12.00				
10.37	Panel Box, Flush Type, 4 Branches	set	1.00				
10.43	Circuit Breaker, 40A 2P	set	1.00				
10.55	Circuit Breaker, 20A 2P	set	3.00				
	Electrical Tape	pc	4.00				
10.54	Wall Fan, 60W, 230V, 60Hz	pc	12.00				
	Fire Extinguisher 10lb	set	3.00				
	Sub-total						

13.00	Painting Works						
	Concrete surfaces	sq.m	350.81				
13.01	Neutralizer	gal	5.00				
13.02	Latex, Flat	gal	24.00				
13.03	Masonry Putty	gal	18.00				
13.04	Latex, Semi Gloss	gal	24.00				
13.05	Acri Color	qrt	6.00				
	Interior and Exterior Ceiling	sq.m	205.00				
13.06	Enamel, Flatwall	gal	14.00				
13.07	Glazing Putty	gal	11.00				
13.08	Enamel, Semi Gloss	gal	14.00				
13.09	Paint Thinner	gal	7.00				
	Doors and Windows	sq.m	11.34				
13.06	Enamel, Flatwall	gal	1.00				
13.08	Enamel, Semi Gloss	gal	1.00				
13.09	Paint Thinner	gal	1.00				
	Sub-total						
14.00	Tile Works						
	Floor	sq m	147.20				
14.02	Glazed Floor Tile 40cm x 40cm	pc	989.00				
14.03	Tile Adhesive 25 kg/bag	bag	17.00				
14.05	Tile Grout 5 kg/bag	bag	2.00				
2.02	Portland Cement	bag	45.00				
2.05	Washed Sand	cu.m	4.00				
	Sub-total						
BUILDING NO.2: SCHOOL BUILDING 2- 7 x 8 1CL							
5.00	Masonry Works						
	Masonry	lot	1.00				
2.02	Portland Cement	bag	3.00				
2.05	Washed Sand	cu.m	0.50				
5.03	CHB 4" thk	pc	10.00				
5.06	Concrete Louver Blocks	pc	16.00				
	Sub-total						
6.00	Doors and Windows						
6.01	Removal of Door with Jamb	set	1.00				
6.02	Removal of Window with Jamb	sq.m	14.56				
6.03	D-1, Steel door 0.90m x 2.10m On 50mm x 100mm Steel Jamb with Padlock	set	2.00				
6.07	W - 1, (2.6 x 1.6 m) Jalousie Window with Clear Glass Blades on JalouPlus Type Silver Colored Frame and Fixed Clear Glass Transom on 50 x 100 mm Steel Jamb complete with Accessories	set	1.00				
6.45	W - 2, (1.3 x 1.6 m) Jalousie Window with Clear Glass Blades on JalouPlus Type Silver Colored Frame and Fixed Clear Glass Transom on 50 x 100 mm Steel Jamb complete with Accessories	set	3.00				
6.15	Security Grilles	sq.ft	111.90				
	Sub-total						
7.00	Steel Works						
7.08	Trusses and Members						
9.01	Removal of Wooden Truss and wooden beams	lot	1.00				
9.01	Removal of Purlins	lot	1.00				
7.01	L 50 X 50 X 6mm	kg	1,036.80				
7.09	2" x 4" 1.5mm C-purlins	kg	740.16				
7.10	L 50 x 50 x 2mm	kg	11.00				
7.22	12mmØ Sag Rods with Standard Nuts and Washers	pc	96.00				
7.19	Plain Round Bar 16mmØ x 6m	pc	8.00				
7.20	Turn Buckle 16 mmØ	pc	8.00				
7.15	Anchor Bolt with Nuts and Washer, 16mmØ x 50mm x 300mm	pc	32.00				
7.12	Steel Plate 1.20m x 2.40m x 10mm thk	pc	1.00				
7.13	Steel Plate 1.20m x 2.40m x 12mm thk	pc	0.50				
7.36	Welding Rod	kg	30.00				
13.11	Primer, Zinc Chromate	gal	2.00				
	Sub-total						

8.00	Roofing Works						
8.01	Removal of Roofing Sheets	sq m	102.00				
8.02	Removal of Ridge Roll	pc	4.00				
8.03	Removal of Flashing	pc	10.00				
8.05	Removal of Fascia Board	pc	12.00				
8.06	G.I. Long-Span Roofing, Corrugated, Pre-Painted, 1220mm x 0.5mm BMT	lm	102.00				
8.07	G.I. Ridge Roll, Prefomed, Pre-Painted, 0.610m x 2.440m x 0.6mm BMT	pc	4.00				
8.08	G.I. Flashing, Prefomed, Pre-Painted, 0.610m x 2.440m x 0.5mm BMT	pc	10.00				
	2" x 10" x 1.0mm C - purlins	kg	157.44				
	L 38 x 38 x 4.5 mm	kg	32.40				
	J- Bolt (6mm dia.)	pc	1,020.00				
8.10	Teckscrew 2-1/2"	pc	108.00				
8.13	Roof Sealant	L	1.00				
	Blind Rivets	pc	100.00				
	Sub-total						
9.00	Carpentry Works						
	Interior Ceiling						
9.01	Removal of Ceiling	sq.m	56.00				
9.05	Plywood, Marine 1/4" x 4' x 8'	pc	20.00				
9.10	50mm x 50mm ceiling joist	bdf	120.96				
9.08	50mm x 75mm ceiling Joist	bdf	233.28				
9.11	Rough Lumber, Sun Dried, tanguile	bdf	354.24				
8.11	Finishing Nails	kg	1.00				
9.22	Concrete Nails	kg	1.00				
9.12	CWN, Assorted	kg	2.00				
9.14	Wood preservatives, Brown	L	1.00				
	Exterior Ceiling	sq.m	29.72				
9.05	Plywood, Marine 1/4" x 4' x 8'	pc	11.00				
9.10	50mm x 50mm ceiling joist	bdf	48.00				
9.08	50mm x 75mm ceiling Joist	bdf	79.20				
9.11	Rough Lumber, Sun Dried, tanguile	bdf	127.20				
8.11	Finishing Nails	kg	1.00				
9.22	Concrete Nails	kg	1.00				
9.12	CWN, Assorted	kg	1.00				
9.14	Wood preservatives, Brown	L	1.00				
9.13	25mm x 25mm x 300mm Wood slats @25mm clear spacing ceiling ventilation (provide stainless steel wire mesh inside)	pc	4.00				
	Blackboards	sq.m	5.76				
9.18	S4S Lumber, Kiln Dried, Tanguile	bd.ft	74.00				
9.20	Lawanit, 1/4" thk	pc	2.00				
9.21	Finishing Nails	kg	1.00				
4.04	CWN, Assorted	kg	1.00				
9.22	Concrete Nails	kg	1.00				
	Sub-total						
10.00	Electrical Works						
	Roughing-ins						
10.01	Electrical Conduit uPVC, 15mmØ	pc	30.00				
10.08	Entrance Cap 20mm dia.	pc	1.00				
10.12	Junction Box, 4" x 4" G.I.	pc	5.00				
10.13	Utility Box, 2" x 4" G.I.	pc	7.00				
10.14	Grounding Rod, 2.4m x 16mm dia.	pc	1.00				
	Wires & Fixtures		-				
10.16	3.5 mm² THHN Wire, Stranded	m	120.00				
	8.0 mm² THHN Wire, Stranded	m	10.00				
10.27	Duplex Convenience Outlet, Grounding Type, 20A, 250V	set	4.00				
10.32	3 Single Pole Wall Switches in One Switch Plate (10 AMP, 230V)	set	1.00				
	Single tube w/ cover + T8 LED tube, 20w, 120cm length	set	1.00				
	Double tube w/ cover + T8 LED tube, 20w x 2, 120cm length	set	4.00				
10.41	Circuit Breaker, 20A 2P	set	1.00				
10.55	Electrical Tape	pc	1.00				
10.54	Wall Fan, 60W, 230V, 60Hz	pc	4.00				
	Fire Extinguisher 10lb	set	1.00				
	Sub-total						

13.00	Painting Works						
	Concrete surfaces	sq.m	139.26				
13.01	Neutralizer	gal	2.00				
13.02	Latex, Flat	gal	10.00				
13.03	Masonry Putty	gal	7.00				
13.04	Latex, Semi Gloss	gal	10.00				
13.05	Acri Color	qrt	3.00				
	Interior and Exterior Ceiling	sq.m	85.72				
13.06	Enamel, Flatwall	gal	6.00				
13.07	Glazing Putty	gal	5.00				
13.08	Enamel, Semi Gloss	gal	6.00				
13.09	Paint Thinner	gal	3.00				
	Doors and Windows	sq.m	1.89				
13.06	Enamel, Flatwall	gal	1.00				
13.08	Enamel, Semi Gloss	gal	1.00				
13.09	Paint Thinner	gal	1.00				
	Sub-total						
14.00	Tile Works						
	Floor	sq.m	56.00				
14.02	Glazed Floor Tile 40cm x 40cm	pc	377.00				
14.03	Tile Adhesive 25 kg/bag	bag	7.00				
14.05	Tile Grout 5 kg/bag	bag	3.00				
2.02	Portland Cement	bag	17.00				
2.05	Washed Sand	cu.m	2.00				
	Sub-total						
BUILDING NO.3: SCHOOL BUILDING 4 HE- 7 x 8 1CL							
5.00	Masonry Works						
	Masonry	lot	1.00				
2.02	Portland Cement	bag	3.00				
2.05	Washed Sand	cu.m	0.50				
5.03	CHB 4" thk	pc	10.00				
5.06	Concrete Louver Blocks	pc	16.00				
	Sub-total						
6.00	Doors and Windows						
6.01	Removal of Door with Jamb	set	2.00				
6.02	Removal of Window with Jamb	sq.m	14.56				
6.03	D-1, Steel door 0.90m x 2.10m On 50mm x 100mm Steel Jamb with padlock	set	3.00				
6.07	W - 1, (2.6 x 1.6 m) Jalousie Window with Clear Glass Blades on JalouPlus Type Silver Colored Frame and Fixed Clear Glass Transom on 50 x 100 mm Steel Jamb complete with Accessories	set	1.00				
6.45	W - 2, (1.3 x 1.6 m) Jalousie Window with Clear Glass Blades on JalouPlus Type Silver Colored Frame and Fixed Clear Glass Transom on 50 x 100 mm Steel Jamb complete with Accessories	set	3.00				
6.15	Security Grilles	sq.ft	111.90				
	Sub-total						
7.00	Steel Works						
7.08	Trusses and Members						
9.01	Removal of Wooden Truss and wooden beams	lot	1.00				
9.01	Removal of Purlins	lot	1.00				
7.01	L 50 X 50 X 6mm	kg	1,036.80				
7.09	2" x 4" 1.5mm C-purlins	kg	740.16				
7.10	L 50 x 50 x 2mm	kg	11.00				
7.22	12mmØ Sag Rods with Standard Nuts and Washers	pc	96.00				
7.19	Plain Round Bar 16mmØ x 6m	pc	8.00				
7.20	Turn Buckle 16 mmØ	pc	8.00				
7.15	Anchor Bolt with Nuts and Washer, 16mmØ x 50mm x 300mm	pc	32.00				
7.12	Steel Plate 1.20m x 2.40m x 10mm thk	pc	1.00				
7.13	Steel Plate 1.20m x 2.40m x 12mm thk	pc	0.50				
7.36	Welding Rod	kg	30.00				
13.11	Primer, Zinc Chromate	gal	2.00				
	Sub-total						

8.00	Roofing Works							
8.01	Removal of Roofing Sheets	sq m	102.00					
8.02	Removal of Ridge Roll	pc	12.00					
8.03	Removal of Flashing	pc	10.00					
8.05	Removal of Fascia Board	pc	12.00					
8.06	G.I. Long-Span Roofing, Corrugated, Pre-Painted, 1220mm x 0.5mm BMT	lm	102.00					
8.07	G.I. Ridge Roll, Preformed, Pre-Painted, 0.610m x 2.440m x 0.6mm BMT	pc	4.00					
8.08	G.I. Flashing, Preformed, Pre-Painted, 0.610m x 2.440m x 0.5mm BMT	pc	10.00					
	2" x 10" x 1.0mm C - purlins	kg	157.44					
	L 38 x 38 x 4.5 mm	kg	32.40					
	J- Bolt (6mm dia.)	pc	1,020.00					
8.10	Teckscrew 2-1/2"	pc	108.00					
8.13	Roof Sealant	L	1.00					
	Blind Rivets	pc	100.00					
	Sub-total							
9.00	Carpentry Works							
	Interior Ceiling							
9.01	Removal of Ceiling	sq.m	56.00					
9.05	Plywood, Marine 1/4" x 4' x 8'	pc	20.00					
9.10	50mm x 50mm ceiling joist	bdf	120.96					
9.08	50mm x 75mm ceiling Joist	bdf	233.28					
9.11	Rough Lumber, Sun Dried, tanguile	bdf	354.24					
8.11	Finishing Nails	kg	1.00					
9.22	Concrete Nails	kg	1.00					
9.12	CWN, Assorted	kg	2.00					
9.14	Wood preservatives, Brown	L	1.00					
	Exterior Ceiling	sq.m	29.72					
9.05	Plywood, Marine 1/4" x 4' x 8'	pc	11.00					
9.10	50mm x 50mm ceiling joist	bdf	48.00					
9.08	50mm x 75mm ceiling Joist	bdf	79.20					
9.11	Rough Lumber, Sun Dried, tanguile	bdf	127.20					
8.11	Finishing Nails	kg	1.00					
9.22	Concrete Nails	kg	1.00					
9.12	CWN, Assorted	kg	1.00					
9.14	Wood preservatives, Brown	L	1.00					
9.13	25mm x 25mm x 300mm Wood slats @25mm clear spacing ceiling ventilation (provide stainless steel wire mesh inside)	pc	4.00					
	Blackboards	sq.m	5.76					
9.18	S4S Lumber, Kiln Dried, Tanguile	bd.ft	74.00					
9.20	Lawanit, 1/4" thk	pc	2.00					
9.21	Finishing Nails	kg	1.00					
4.04	CWN, Assorted	kg	1.00					
9.22	Concrete Nails	kg	1.00					
	Sub-total							
10.00	Electrical Works							
	Roughing-ins							
10.01	Electrical Conduit uPVC, 15mmØ	pc	30.00					
10.08	Entrance Cap 20mm dia.	pc	1.00					
10.12	Junction Box, 4" x 4" G.I.	pc	5.00					
10.13	Utility Box, 2" x 4" G.I.	pc	7.00					
10.14	Grounding Rod, 2.4m x 16mm dia.	pc	1.00					
	Wires & Fixtures		-					
10.16	3.5 mm² THHN Wire, Stranded	m	120.00					
	8.0 mm² THHN Wire, Stranded	m	10.00					
10.27	Duplex Convenience Outlet, Grounding Type, 20A, 250V	set	4.00					
10.32	3 Single Pole Wall Switches in One Switch Plate (10 AMP, 230V)	set	1.00					
	Single tube w/ cover + T8 LED tube, 20w, 120cm length	set	1.00					
	Double tube w/ cover + T8 LED tube, 20w x 2 , 120cm length	set	4.00					
10.41	Circuit Breaker, 20A 2P	set	1.00					
10.55	Electrical Tape	pc	1.00					
10.54	Wall Fan, 60W, 230V, 60Hz	pc	4.00					
	Fire Extinguisher 10lb	set	1.00					
	Sub-total							

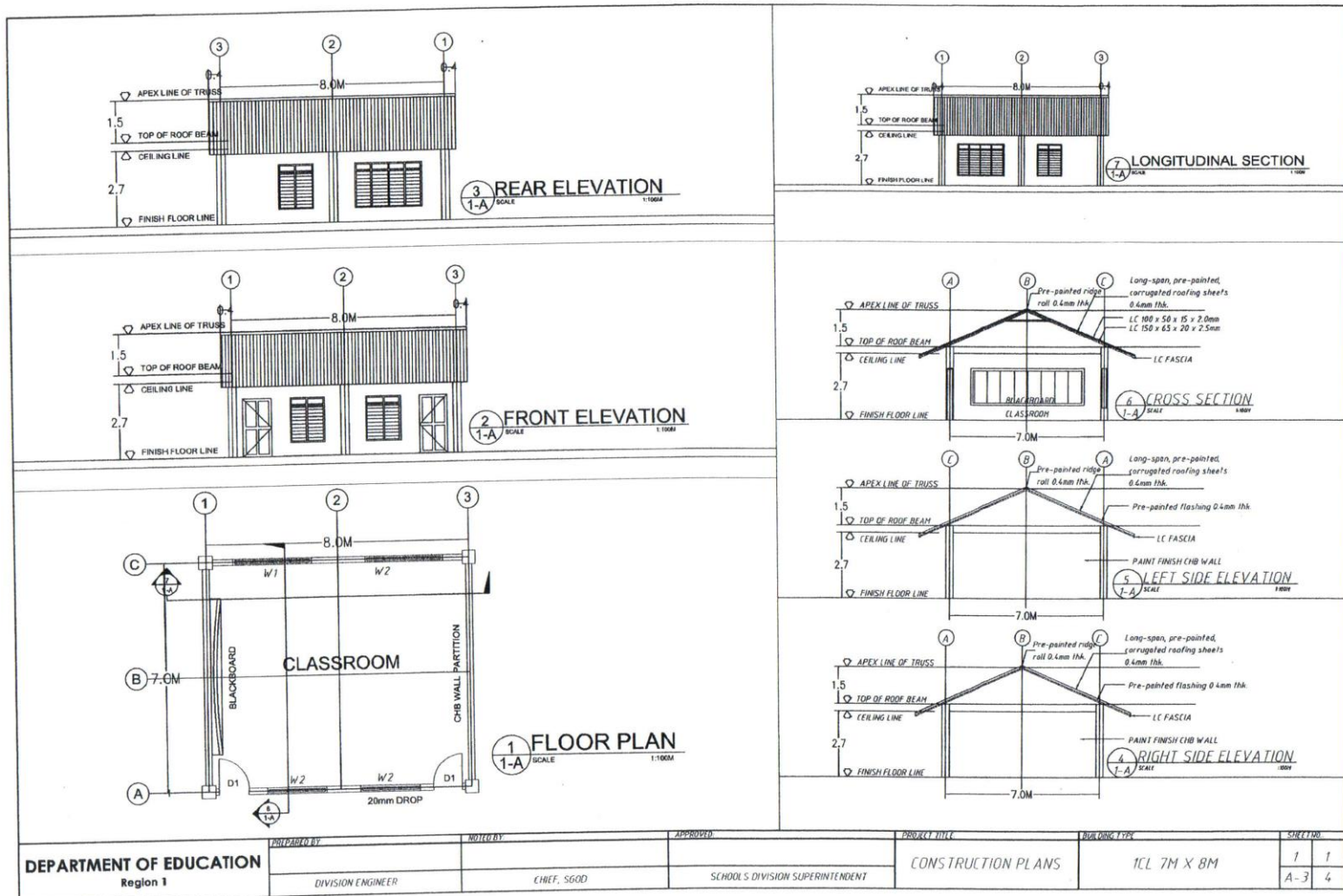
13.00	Painting Works						
	Concrete surfaces	sq.m	139.26				
13.01	Neutralizer	gal	2.00				
13.02	Latex, Flat	gal	10.00				
13.03	Masonry Putty	gal	7.00				
13.04	Latex, Semi Gloss	gal	10.00				
13.05	Acri Color	qrt	3.00				
	Interior and Exterior Ceiling	sq.m	85.72				
13.06	Enamel, Flatwall	gal	6.00				
13.07	Glazing Putty	gal	5.00				
13.08	Enamel, Semi Gloss	gal	6.00				
13.09	Paint Thinner	gal	3.00				
	Doors and Windows	sq.m	1.89				
13.06	Enamel, Flatwall	gal	1.00				
13.08	Enamel, Semi Gloss	gal	1.00				
13.09	Paint Thinner	gal	1.00				
	Sub-total						
14.00	Tile Works						
	Floor	sq m	56.00				
14.02	Glazed Floor Tile 40cm x 40cm	pc	377.00				
14.03	Tile Adhesive 25 kg/bag	bag	7.00				
14.05	Tile Grout 5 kg/bag	bag	3.00				
2.02	Portland Cement	bag	17.00				
2.05	Washed Sand	cu.m	2.00				
	Sub-total						
BUILDING NO.4: SCHOOL BUILDING 5- 7 x 35 5CL							
5.00	Masonry Works						
	Masonry	sq m	8.32				
2.02	Portland Cement	bag	5.00				
2.05	Washed Sand	cu.m	0.50				
5.03	CHB 4" thk	pc	104.00				
	Sub-total						
6.00	Doors and Windows						
6.01	Removal of Door with Jamb	set	10.00				
6.02	Removal of Window with Jamb	sq.m	62.40				
6.03	D-1, Steel door 0.90m x 2.10m On 50mm x 100mm Steel Jamb with padlock	set	10.00				
6.07	W - 1, (2.6 x 1.6 m) Jalousie Window with Clear Glass Blades on JalouPlus Type Silver Colored Frame and Fixed Clear Glass Transom on 50 x 100 mm Steel Jamb complete with Accessories	set	6.00				
6.45	W - 2, (1.3 x 1.6 m) Jalousie Window with Clear Glass Blades on JalouPlus Type Silver Colored Frame and Fixed Clear Glass Transom on 50 x 100 mm Steel Jamb complete with Accessories	set	14.00				
6.15	Security Grilles	sq.ft	581.90				
	Sub-total						
7.00	Steel Works						
7.08	Trusses and Members						
9.01	Removal of Steel Truss	lot	1.00				
9.01	Removal of Purlins	lot	1.00				
7.01	L 50 X 50 X 6mm	kg	2,851.20				
7.09	2" x 4" 1.5mm C-purlins	kg	1,295.28				
7.10	L 50 x 50 x 2mm	kg	55.00				
7.22	12mmØ Sag Rods with Standard Nuts and Washers	pc	480.00				
7.19	Plain Round Bar 16mmØ x 6m	pc	40.00				
7.20	Turn Buckle 16 mmØ	pc	60.00				
7.15	Anchor Bolt with Nuts and Washer, 16mmØ x 50mm x 300mm	pc	48.00				
7.12	Steel Plate 1.20m x 2.40m x 10mm thk	pc	2.00				
7.13	Steel Plate 1.20m x 2.40m x 12mm thk	pc	0.50				
7.36	Welding Rod	kg	55.00				
13.11	Primer, Zinc Chromate	gal	3.00				
	Sub-total						

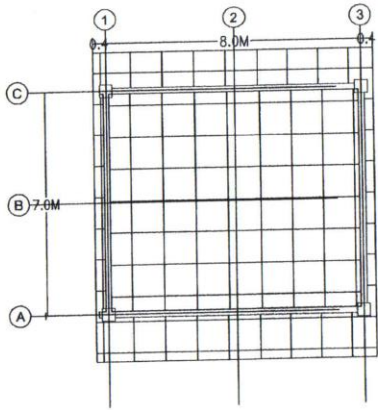
8.00	Roofing Works						
8.01	Removal of Roofing Sheets	sq m	386.00				
8.02	Removal of Ridge Roll	pc	17.00				
8.03	Removal of Flashing	pc	10.00				
8.05	Removal of Fascia Board	pc	12.00				
8.06	G.I. Long-Span Roofing, Corrugated, Pre-Painted, 1220mm x 0.5mm BMT	lm	386.00				
8.07	G.I. Ridge Roll, Preformed, Pre-Painted, 0.610m x 2.440m x 0.6mm BMT	pc	17.00				
8.08	G.I. Flashing, Preformed, Pre-Painted, 0.610m x 2.440m x 0.5mm BMT	pc	10.00				
	2" x 10" x 1.0mm C - purlins	kg	354.24				
	L 38 x 38 x 4.5 mm	kg	32.40				
	J- Bolt (6mm dia.)	pc	3,860.00				
8.10	Teckscrew 2-1/2"	pc	108.00				
8.13	Roof Sealant	L	1.00				
	Blind Rivets	pc	100.00				
	Sub-total						
9.00	Carpentry Works						
	Interior Ceiling						
9.01	Removal of Ceiling	sq.m	245.00				
9.05	Plywood, Marine 1/4" x 4' x 8'	pc	86.00				
9.10	50mm x 50mm ceiling joist	bdft	604.80				
9.08	50mm x 75mm ceiling Joist	bdft	1,166.40				
9.11	Rough Lumber, Sun Dried, tanguile	bdft	1,771.20				
8.11	Finishing Nails	kg	1.00				
9.22	Concrete Nails	kg	1.00				
9.12	CWN, Assorted	kg	3.00				
9.14	Wood preservatives, Brown	L	2.00				
	Exterior Ceiling	sq.m	99.07				
9.05	Plywood, Marine 1/4" x 4' x 8'	pc	35.00				
9.10	50mm x 50mm ceiling joist	bdft	112.00				
9.08	50mm x 75mm ceiling Joist	bdft	120.00				
9.11	Rough Lumber, Sun Dried, tanguile	bdft	232.00				
8.11	Finishing Nails	kg	1.00				
9.22	Concrete Nails	kg	1.00				
9.12	CWN, Assorted	kg	1.00				
9.14	Wood preservatives, Brown	L	1.00				
9.13	25mm x 25mm x 300mm Wood slats @25mm clear spacing ceiling ventilation (provide stainless steel wire mesh inside)	pc	6.00				
	Blackboards	sq.m	28.80				
9.18	S4S Lumber, Kiln Dried, Tanguile	bd.ft	370.00				
9.20	Lawanit, 1/4" thk	pc	10.00				
9.21	Finishing Nails	kg	1.00				
4.04	CWN, Assorted	kg	7.00				
9.22	Concrete Nails	kg	1.00				
	Sub-total						
10.00	Electrical Works						
	Roughing-ins						
10.01	Electrical Conduit uPVC, 15mmØ	pc	75.00				
10.08	Entrance Cap 20mm dia.	pc	1.00				
10.12	Junction Box, 4" x 4" G.I.	pc	30.00				
10.13	Utility Box, 2" x 4" G.I.	pc	25.00				
10.14	Grounding Rod, 2.4m x 16mm dia.	pc	1.00				
	Wires & Fixtures		-				
10.16	3.5 mm² THHN Wire, Stranded	m	600.00				
	8.0 mm² THHN Wire, Stranded	m	10.00				
10.27	Duplex Convenience Outlet, Grounding Type, 20A, 250V	set	20.00				
10.32	3 Single Pole Wall Switches in One Switch Plate (10 AMP, 230V)	set	5.00				
	Single tube w/ cover + T8 LED tube, 20w, 120cm length	set	5.00				
	Double tube w/ cover + T8 LED tube, 20w x 2, 120cm length	set	20.00				
10.37	Panel Box, Flush Type, 8 Branches	set	1.00				
10.43	Circuit Breaker, 60A 2P	set	1.00				
10.55	Circuit Breaker, 20A 2P	set	5.00				
	Electrical Tape	pc	5.00				
10.54	Wall Fan, 60W, 230V, 60Hz	pc	20.00				
	Fire Extinguisher 10lb	set	5.00				
	Sub-total						

13.00	Painting Works						
	Concrete surfaces	sq.m	447.96				
13.01	Neutralizer	gal	6.00				
13.02	Latex, Flat	gal	30.00				
13.03	Masonry Putty	gal	23.00				
13.04	Latex, Semi Gloss	gal	30.00				
13.05	Acri Color	qrt	8.00				
	Interior and Exterior Ceiling	sq.m	344.07				
13.06	Enamel, Flatwall	gal	23.00				
13.07	Glazing Putty	gal	18.00				
13.08	Enamel, Semi Gloss	gal	23.00				
13.09	Paint Thinner	gal	12.00				
	Doors and Windows	sq.m	42.00				
13.06	Enamel, Flatwall	gal	2.00				
13.08	Enamel, Semi Gloss	gal	2.00				
13.09	Paint Thinner	gal	1.00				
	Sub-total						
14.00	Tile Works						
	Floor	sq m	245.00				
14.02	Glazed Floor Tile 40cm x 40cm	pc	1,647.00				
14.03	Tile Adhesive 25 kg/bag	bag	27.00				
14.05	Tile Grout 5 kg/bag	bag	2.00				
2.02	Portland Cement	bag	74.00				
2.05	Washed Sand	cu.m	7.00				
	Sub-total						
I	DIRECT COST						
II	INDIRECT COST 22% of (I - Gen. Req.)						
III	TAX 5% OF (I+II)						
IV	TOTAL CONSTRUCTION COST (I+ II+ III)						

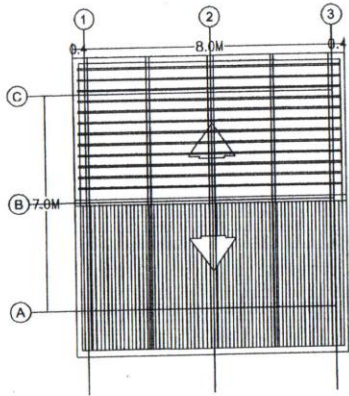
Section VII. Drawings

[Insert here a list of Drawings. The actual Drawings, including site plans, should be attached to this section, or annexed in a separate folder.]





REFLECTED CEILING PLAN
 1
 2-A SCALE 1:100M



ROOF PLAN
 3
 2-A SCALE 1:100M

	<p>Steel Door 0.90m x 2.10m on 50mm x 100mm Steel Jamb with keyed lever type lockset</p>
	<p>Jalousie Windows with Clear Glass Blades on Standard Aluminum Type Silver Colored Frame and Fixed Clear Glass Transom on 50 x 100 mm Steel Jamb complete with accessories</p>
	<p>Jalousie Windows with Clear Glass Blades on Standard Aluminum Type Silver Colored Frame and Fixed Clear Glass Transom on 50 x 100 mm Steel Jamb complete with accessories</p>

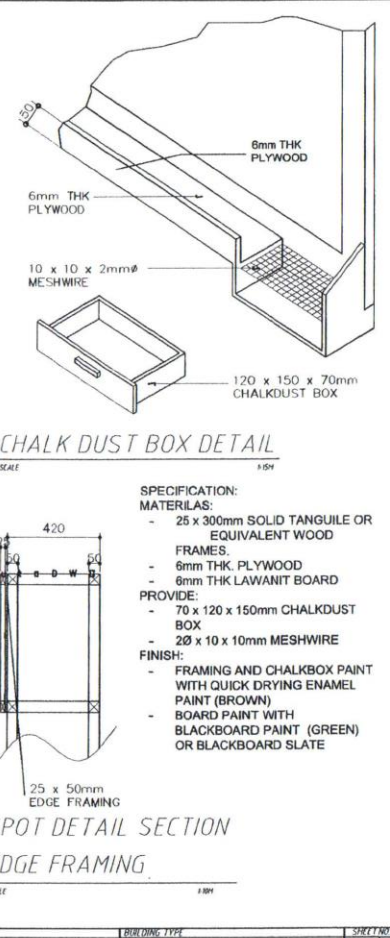
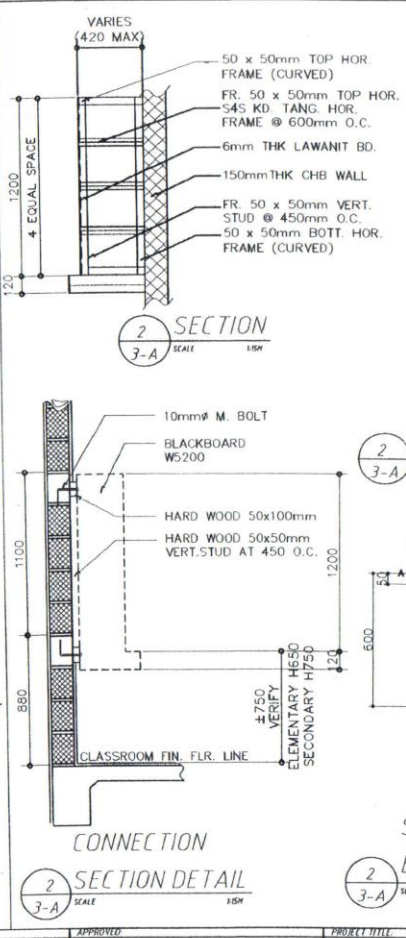
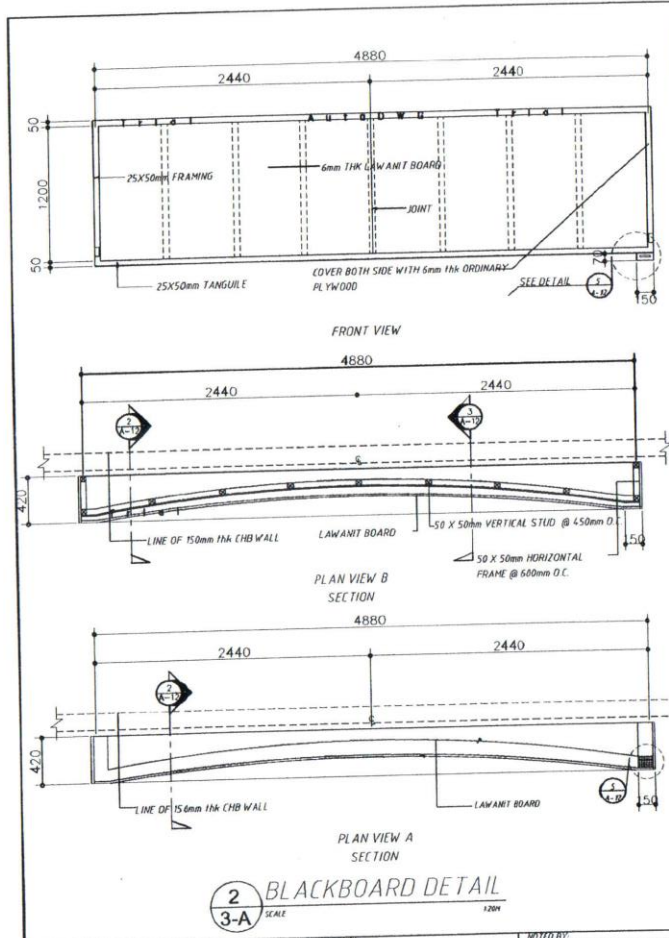
DOORS AND WINDOWS

SCHEDULE

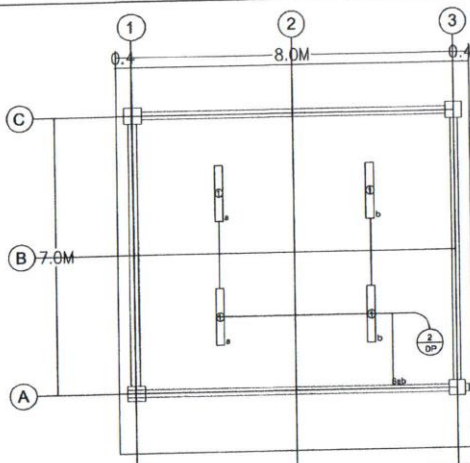
4
 2-A SCALE

1:100M

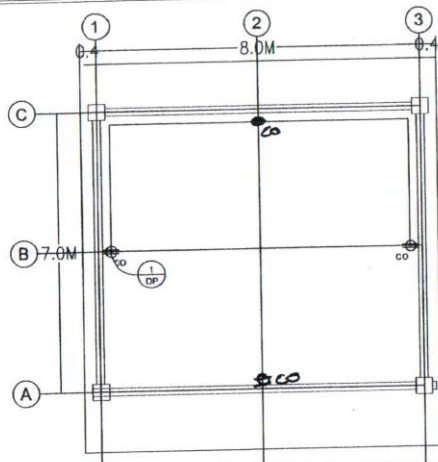
DEPARTMENT OF EDUCATION Region 1	PREPARED BY	NOTED BY	APPROVED	PROJECT TITLE	BUILDING TYPE	SHEET NO	
	DIVISION ENGINEER	CHIEF, SGDD	SCHOOLS DIVISION SUPERINTENDENT	CONSTRUCTION PLANS	1CL 7M X 8M	2	2
						A-3	4



DEPARTMENT OF EDUCATION Region 1	PREPARED BY:	NOTED BY:	APPROVED:	PROJECT TITLE:	BUILDING TYPE:	SHEET NO.:
	DIVISION ENGINEER	CHIEF, SGDD	SCHOOL'S DIVISION SUPERINTENDENT	CONSTRUCTION PLANS	1CL 7M X 8M	3 3 A-3 4



1 LIGHTING LAYOUT
SCALE 1:100M



2 POWER LAYOUT
SCALE 1:100M

PANEL BOARD: MDP MAIN: 225A, 2P, 35KAIC, 230V

CKT. NO.	LOAD DESCRIPTION	VA		CIRCUIT BREAKER			MAIN WIRE & CONDUIT SIZE
		LOAD	VOLTS	AF	P	AT	
1	CONVENIENCE OUTLETS	1,000	230	50	2	15	2-3.5mm ² THHN + 1-3.5mm ² TW(G) in 15mm ϕ C
2	LIGHTING OUTLETS	1,200	230	50	2	15	2-3.5mm ² THHN + 1-3.5mm ² TW(G) in 15mm ϕ C
	TOTAL	2,200					MAIB: 50AF, P, 40V, 18KAIC

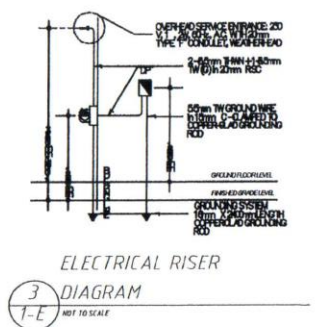
SIZE OF SERVICE ENTRANCE CONDUCTOR:
 $I_{cond} = 2.280VA = 9.91A$ USE: 2-8.0mm² THHN WIRE + 1-5.5mm² TW (G) IN 20mm ϕ RSC
 230V

LOAD CALCULATION
NOT DRAWN TO SCALE

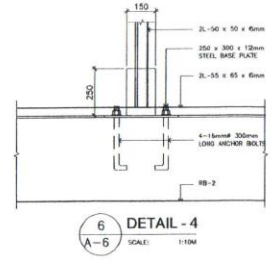
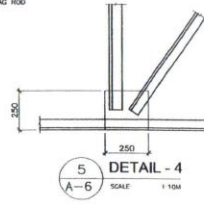
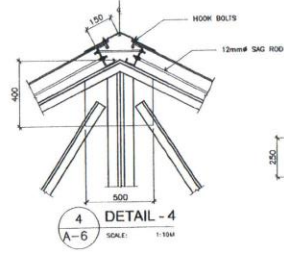
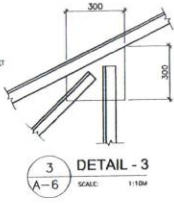
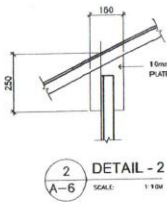
- ELECTRICAL NOTES:**
- ALL ELECTRICAL WORKS SHALL BE DONE IN ACCORDANCE WITH THE PROVISION OF THE LATEST EDITION OF THE PHILIPPINE ELECTRICAL CODE, EXISTING APPLICABLE ORDINANCES, RULES AND REGULATIONS OF THE LOCAL GOVERNMENT AND WITH THE REQUIREMENTS OF THE LOCAL POWER COMPANY.
 - THE ELECTRICAL SERVICE PROVIDER SHALL BE 1-PHASE, 2-WIRE 230V AC, 60Hz.
 - WIRING METHOD SHALL BE AS FOLLOWS:
RIGID STEEL CONDUIT OR POLYVINYL CHLORIDE CONDUIT SCHEDULE 40 SHALL BE USED AS SPECIFIED IN THE PLAN.
 - ALL WIRES SHALL BE COPPER AND THERMOPLASTIC INSULATED TYPE "THHN" UNLESS OTHERWISE INDICATED IN THE PLAN. THE MINIMUM SIZE WIRE FOR POWER AND LIGHTING CIRCUIT HOMERUNS SHALL BE 35mm² AND INSULATED FOR 600V/TS. LIKEWISE, ALL CONDUCTORS SHALL BE COLOR-CODED, SMALLEST RACEWAY SHALL BE 15mm dia. (NOMINAL).
 - ALL OUTLET BOXES SHALL BE GALVANIZED GAGE NO.16 DEEP TYPE.
 - ALL MATERIALS TO BE USED SHALL BE BRAND NEW AND OF THE APPROVED TYPE FOR LOCATION AND PURPOSE.
 - EQUIPMENT GROUNDING SYSTEM SHALL BE PROVIDED TO THE ELECTRICAL SYSTEMS AS PER PHILIPPINE ELECTRICAL CODE REQUIREMENT.
 - MOUNTING HEIGHT OF WIRING DEVICES SHALL BE AS FOLLOWS:
 a.) LIGHT SWITCH - 1.20M ABOVE FINISH FLOOR.
 b.) CONVENIENCE OUTLET - 0.3M ABOVE FINISH FLOOR

LEGEND:

SYMBOL	DESCRIPTION
	1a ALWAYS FLUORESCENT LAMP
SAB	TWO SINGLE POLE SWITCHES IN ONE SWITCH PLAT. 50A, 240V
	DUPLEX CONVENIENCE OUTLET, GROUNDING TYPE S AMP, 250 VOLT
LP	LIGHT METER BOX
	PANELBOARD
MDP	MAIN DISTRIBUTION PANELBOARD
M	SERVICE METER
	RACEWAY CONDUIT CONCEALED IN CEILING
	RACEWAY CONDUIT CONCEALED UNDER FLOOR

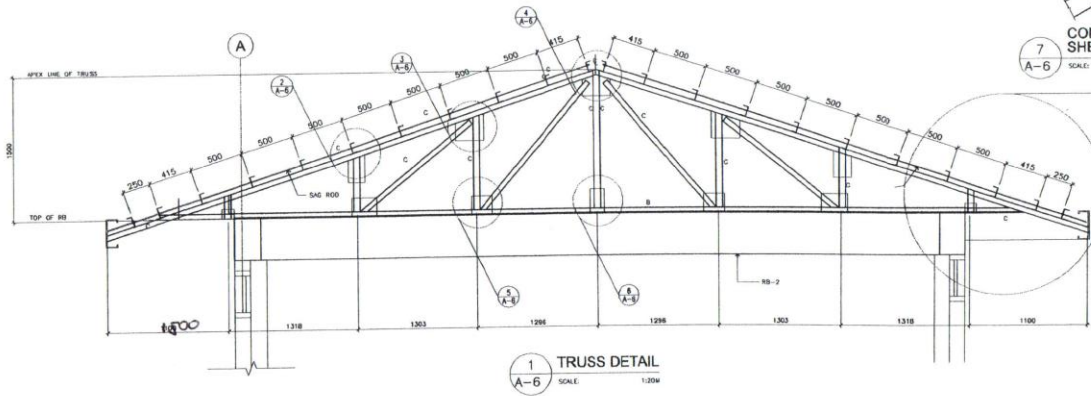
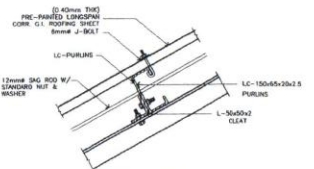


DEPARTMENT OF EDUCATION Region 1	PREPARED BY:	NOTIFIED BY:	APPROVED:	PROJECT TITLE:	BUILDING TYPE:	SHEET NO.:
	DIVISION ENGINEER	CHIEF, SGOD	SCHOOL'S DIVISION SUPERINTENDENT	CONSTRUCTION PLANS	ICL 7M X 8M	1 / 4 E-1 / 4



NOTES ON ROOF CONSTRUCTION

1. IN ACTUAL FABRICATION OF STEEL TRUSSES, TRUSSES, MEMBERS MEETING AT POINT SHALL HAVE THEIR GRAVITY AXES INTERSECT AS NEARLY AS PRACTICABLE AT A COMMON POINT.
2. THE CONTRACTOR SHALL PROVIDE TEMPORARY ERECTION BRACKETS AND SHORING AND MAKE ACTUAL MEASUREMENTS IN THE FIELD PRIOR TO FABRICATE/INSTALLATION OF ALL TRUSSES.
3. THE FABRICATOR/CONTRACTOR SHALL SUBMIT DETAILED SHOP DRAWINGS PRIOR TO FABRICATION OF TRUSSES FOR APPROVAL OF THE DIRECTOR, BUREAU OF DESIGN.



REPUBLIC OF THE PHILIPPINES DepEd DEPARTMENT OF EDUCATION PHYSICAL FACILITIES AND SCHOOLS ENGINEERING DIVISION MARALAO AVENUE, PASIG CITY	DRAWN BY ROSELLO U. RIVERA SRS ENGR, PSED-DAED	CHECKED BY NATHANIEL Q. MONDOZA ARCHITECT, PSED-DAED	RECOMMENDING OFFICER LUIS G. PURISMA, JR. SRS ENGR, PSED-OPS Supt.	APPROVED BY ANNABELLE R. PANGOH ASSISTANT CHIEF ENR OFFICE of SA, CHIEF, PSED-OPS	PROJECT TITLE DECS SCHOOL BUILDING (7.0 M X 8.0M)	PROJECT CODE DSB - MPSS	SHEET DEPARTMENT OF EDUCATION DepEd	SHEET NO. A-6 6
	SHEET CONTENTS TRUSS DETAIL							

Section VIII. Bill of Quantities

Notes on the Bill of Quantities

Objectives

The objectives of the Bill of Quantities are:

- a. to provide sufficient information on the quantities of Works to be performed to enable Bids to be prepared efficiently and accurately; and
- b. when a Contract has been entered into, to provide a priced Bill of Quantities for use in the periodic valuation of Works executed.

In order to attain these objectives, Works should be itemized in the Bill of Quantities in sufficient detail to distinguish between the different classes of Works, or between Works of the same nature carried out in different locations or in other circumstances which may give rise to different considerations of cost. Consistent with these requirements, the layout and content of the Bill of Quantities should be as simple and brief as possible.

Daywork Schedule

A Daywork Schedule should be included only if the probability of unforeseen work, outside the items included in the Bill of Quantities, is high. To facilitate checking by the Entity of the realism of rates quoted by the Bidders, the Daywork Schedule should normally comprise the following:

- a. A list of the various classes of labor, materials, and Constructional Plant for which basic daywork rates or prices are to be inserted by the Bidder, together with a statement of the conditions under which the Contractor will be paid for work executed on a daywork basis.
- b. Nominal quantities for each item of Daywork, to be priced by each Bidder at Daywork rates as Bid. The rate to be entered by the Bidder against each basic Daywork item should include the Contractor's profit, overheads, supervision, and other charges.

Provisional Sums

A general provision for physical contingencies (quantity overruns) may be made by including a provisional sum in the Summary Bill of Quantities. Similarly, a contingency allowance for possible price increases should be provided as a provisional sum in the Summary Bill of Quantities. The inclusion of such provisional sums often facilitates budgetary approval by avoiding the need to request periodic supplementary approvals as the future need arises. Where such provisional sums or contingency allowances are used, the SCC should state the manner in which they will be used, and under whose authority (usually the Procuring Entity's Representative's).

The estimated cost of specialized work to be carried out, or of special goods to be supplied, by other contractors should be indicated in the relevant part of the Bill of Quantities as a particular provisional sum with an appropriate brief description. A separate procurement procedure is normally carried out by the Procuring Entity to select such specialized contractors. To provide an element of competition among the Bidders in respect of any facilities, amenities, attendance, etc., to be provided by the successful Bidder as prime Contractor for the use and convenience of the specialist contractors, each related provisional sum should be followed by an item in the Bill of Quantities inviting the Bidder to quote a sum for such amenities, facilities, attendance, etc.

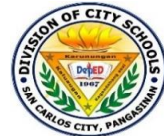
Signature Box

A signature box shall be added at the bottom of each page of the Bill of Quantities where the authorized representative of the Bidder shall affix his signature. Failure of the authorized representative to sign each and every page of the Bill of Quantities shall be a cause for rejection of his bid.

These Notes for Preparing a Bill of Quantities are intended only as information for the Procuring Entity or the person drafting the Bidding Documents. They should not be included in the final documents.



Republic of the Philippines
DEPARTMENT OF EDUCATION
 REGION I
SAN CARLOS CITY



Roxas Boulevard, San Carlos City, Pangasinan
 Tel. No./Fax No. (075) 632-3293 (OSDS) Trunkline Nos. (075) 633-5691 to 93

PROGRAM OF WORK
BILL OF QUANTITIES

REPAIR 2024- REGION I- SAN CARLOS CITY - 001

School: MABALBALINO ELEMENTARY SCHOOL			Date:			
School I.D: 102246				Budget Allocation:		PHP 6,200,000.00
Region: I			Engineering and Administrative Overhead:			
Division: SAN CARLOS CITY			Approved Budget for Contract:		PHP 6,200,000.00	
Project Title:			Completion Period: 120 calendar days			
PROPOSED REPAIR AND REHABILITATION OF TEN (10) - CLASSROOM SCHOOL BUILDING			Minimum Required Manpower:			
			General Foreman	Welder	Carpenter	
			Helper	Mason	Painter	
Location:			Minimum Required Equipment:			
SAN CARLOS CITY			Hand Tools	Welding Machine		
Item I.D.	Item Description	% of Total	Unit	Quantity	Total Cost	Remarks
I. DIRECT COST						
	General Requirements		lot	1.00		
BUILDING NO.1: SCHOOL BUILDING 1- 7 X 18 CL						
5.00	Masonry Works		lot	1.00		
6.00	Doors and Windows		set	9.00		
7.00	Steel Works		kg	2,688.92		
8.00	Roofing Works		lm	222.00		
9.00	Carpentry Works		sq.m	222.28		
10.00	Electrical Works		lot	1.00		
13.00	Painting Works		sq.m	544.51		
14.00	Tile Works		sq m	147.20		
BUILDING NO.2: SCHOOL BUILDING 2- 7 x 8 1CL						
5.00	Masonry Works		lot	1.00		
6.00	Doors and Windows		set	5.00		
7.00	Steel Works		kg	1,501.56		
8.00	Roofing Works		lm	102.00		
9.00	Carpentry Works		sq.m	93.65		
10.00	Electrical Works		lot	1.00		
13.00	Painting Works		sq.m	224.62		
14.00	Tile Works		sq.m	392.00		
BUILDING NO.3: SCHOOL BUILDING 4 HE- 7 x 8 1CL						
5.00	Masonry Works		lot	1.00		
6.00	Doors and Windows		set	6.00		
7.00	Steel Works		kg	1,501.56		
8.00	Roofing Works		sq m	102.00		
9.00	Carpentry Works		sq.m	93.65		
10.00	Electrical Works		lot	1.00		
13.00	Painting Works		sq.m	6.00		
14.00	Tile Works		sq.m	56.00		

BUILDING NO.4: SCHOOL BUILDING 5- 7 x 35 5CL						
5.00	Masonry Works			sq m	8.32	
6.00	Doors and Windows			set	20.00	
7.00	Steel Works			kg	4,417.36	
8.00	Roofing Works			sq m	386.00	
9.00	Carpentry Works			sq.m	310.42	
10.00	Electrical Works			lot	1.00	
13.00	Painting Works			sq.m	1,122.52	
14.00	Tile Works			sq m	245.00	
	Sub-Total					
	II. INDIRECT COST 22% of (I - Gen. Req.)					
	Overhead Expenses (8%)					
	Contingencies (3%)					
	Miscellaneous (1%)					
	Contractor's Profit (10%)					
	Sub-Total					
	III. TAX 5% of (I+II)					
	Sub-Total					
	IV. TOTAL CONSTRUCTION COST (I + II +					

Section IX. Checklist of Technical and Financial Documents

Notes on the Checklist of Technical and Financial Documents

The prescribed documents in the checklist are mandatory to be submitted in the Bid, but shall be subject to the following:

- a. GPPB Resolution No. 09-2020 on the efficient procurement measures during a State of Calamity or other similar issuances that shall allow the use of alternate documents in lieu of the mandated requirements; or
- b. any subsequent GPPB issuances adjusting the documentary requirements after the effectivity of the adoption of the PBDs.

The BAC shall be checking the submitted documents of each Bidder against this checklist to ascertain if they are all present, using a non-discretionary “pass/fail” criterion pursuant to Section 30 of the 2016 revised IRR of RA No. 9184.

Checklist of Technical and Financial Documents

I. TECHNICAL COMPONENT ENVELOPE

Class "A" Documents

Legal Documents

- (a) Valid PhilGEPS Registration Certificate (Platinum Membership) (all pages) in accordance with Section 8.5.2 of the IRR;

Technical Documents

- (b) Statement of the prospective bidder of all its ongoing government and private contracts, including contracts awarded but not yet started, if any, whether similar or not similar in nature and complexity to the contract to be bid; **and**
- (c) Statement of the bidder's Single Largest Completed Contract (SLCC) similar to the contract to be bid, except under conditions provided under the rules; **and**
- (d) Special PCAB License in case of Joint Ventures **and** registration for the type and cost of the contract to be bid; **and**
- (e) Original copy of Bid Security. If in the form of a Surety Bond, submit also a certification issued by the Insurance Commission **or** original copy of Notarized Bid Securing Declaration; **and**
- (f) Project Requirements, which shall include the following:
- a. Organizational chart for the contract to be bid;
 - b. List of contractor's key personnel (*e.g.*, Project Manager, Project Engineers, Materials Engineers, and Foremen), to be assigned to the contract to be bid, with their complete qualification and experience data;
 - c. List of contractor's major equipment units, which are owned, leased, and/or under purchase agreements, supported by proof of ownership or certification of availability of equipment from the equipment lessor/vendor for the duration of the project, as the case may be; **and**
- (g) Original duly signed Omnibus Sworn Statement (OSS) **and** if applicable, Original Notarized Secretary's Certificate in case of a corporation, partnership, or cooperative; or Original Special Power of Attorney of all members of the joint venture giving full power and authority to its officer to sign the OSS and do acts to represent the Bidder.

Financial Documents

- (h) The prospective bidder's computation of Net Financial Contracting Capacity (NFCC).

Class “B” Documents

- (i) If applicable, duly signed joint venture agreement (JVA) in accordance with RA No. 4566 and its IRR in case the joint venture is already in existence **or** duly notarized statements from all the potential joint venture partners stating that they will enter into and abide by the provisions of the JVA in the instance that the bid is successful.

II. FINANCIAL COMPONENT ENVELOPE

- (j) Original of duly signed and accomplished Financial Bid Form; **and**

Other documentary requirements under RA No. 9184

- (k) Original of duly signed Bid Prices in the Bill of Quantities; **and**
- (l) Duly accomplished Detailed Estimates Form, including a summary sheet indicating the unit prices of construction materials, labor rates, and equipment rentals used in coming up with the Bid; **and**
- (m) Cash Flow by Quarter.

